

APSCUF

LOCK HAVEN UNIVERSITY

FACULTY NEWS AND VIEWS

Vol. 99/00 No. 6

January 31, 2000

1999/2000 IMPORTANT APSCUF DATES

- Feb 1** Promotion Portfolios must be submitted to Promotion Committee
- Feb 3-5** Legislative Assembly, Holiday Inn, Grantville
- Feb 1** Membership Meeting – **Ulmer Planetarium 1:00 PM**
- Feb 25** Spring Social (tentative)
- Mar 7** Membership Meeting – **Ulmer Planetarium 1:00 PM**
- Mar 16** Legislator’s Day (more details to come)
- Apr 4** Membership Meeting – **Ulmer Planetarium 1:00 PM**
- Apr 13-15** Legislative Assembly Hotel Brunswick, Lancaster
- May 2** Study Day
- May 2** Spring Picnic/ Membership Meeting – Sieg Conference Center
- May 13** Commencement Ceremony

Please note that the Spring Membership meetings on February 1, March 7, and April 4 have been moved to Ulmer Planetarium.

REMINDERS

- If you have questions regarding your Health & Welfare benefits, contact the APSCUF Office or Al Hoberman, Health & Welfare Specialist.

WHAT’S INSIDE

Important Dates	1
Reminders	1
APSCUF Notes	2
<ul style="list-style-type: none"> • Committee Vacancies • Special Election Results 	
From the Faculty	2-3
FYI...	4-5
<ul style="list-style-type: none"> • Baby Boom at LHU • Tuition Waivers • APSCUF Faculty Internship Program • State APSCUF Request • Spring Social • Disney’s Magic Kingdom Club • Ask Jeff 	
Getting to Know You	6

Welcome Back!

Attachments

Meet and Discuss Minutes

September 14, 1999
 October 26, 1999
 December 14, 1999

Newsletter Committee

Charles Jenkins -- Editor
 Philip Huber – Graphic Design
 Connie Reece

Cheryl Cartwright -- Layout

All faculty are encouraged to submit Articles and Editorials to the APSCUF Office (Raub Hall) or E-mailed to ccartwri@eagle.lhup.edu by the 15th of each month. Articles on computer disk will be greatly appreciated.

APSCUF NOTES

COMMITTEE VACANCIES

Volunteers are still needed for the following committees:

- Academic Awards –
Gerald R. Robinson
Distinguished
- Budget
- CAP
- Fall Founder's Day
Convocation
- Finance
- Legislative
- Membership
- Newsletter

Please contact the APSCUF Office (x2231), or e-mail Cheryl Cartwright at ccartwri@eagle.lhup.edu if you are interested in serving on any of the above committees.

SPECIAL ELECTION RESULTS

The following positions were filled in the December, 1999 special election:

Legislative Alternate Delegate Fay Cook

Term: 12/10/99-9/1/00

Sabbatical Leave Committee Jim Miller

Term: 12/10/99-5/15/01

FROM THE FACULTY

SUGGESTIONS FOR CHANGES IN FUTURE NEGOTIATIONS

Although I have only the highest respect for the APSCUFers who negotiated our most recent contract, I nevertheless would like to put forward for your consideration some thoughts about how to do things differently next time.

The main problem I have with all of our prior negotiations is that they are based on an industrial model that is, in many essential ways, simply irrelevant to the academy. The industrial model depends upon unions using strikes or at least the threat of strikes to create for employers direct economic pressure that threatens the very existence of the employers themselves.

In contrast, an APSCUF strike can elicit at best only indirect economic pressure on the SSHE board of governors. The only threat to its existence--or at least to its continued existence in a form that one might speculate the board members would find acceptable--comes, not directly from striking faculty members, but indirectly from taxpayers, presumably primarily from hundreds of thousands of taxpayers whose children are students in the system. While this threat certainly is very real and truly powerful, it also hurts a third party, i.e., students, as much as if not more than the two sides that are negotiating, and, to be effective, it depends upon a continued accumulation of pressure that might not

culminate for several agonizing weeks or even months.

Moreover, if one side openly criticizes the other side in the media as part of an attempt to win sympathy for its position, then the universities themselves ineluctably suffer collateral damage to their reputations, and, in extreme cases, readers might consider the risk of a future strike real enough to re-think attending our institutions.

All of these negative consequences can be avoided by rejecting an inappropriate industrial model, and, instead, coming up with a new system that provides benefits for all three parties: students, faculty, and the SSHE.

I would suggest that we use our strength, which, in a word, is intellect. Professors are thinkers. How can we use our intellect, our critical thinking capabilities? Here's one way.

We need merely lobby the legislature to pass a concise statute that the SSHE must abide by; it has only three uncomplicated parts.

First, our contract (the CBA) is extended until, say, the year 2100. Secondly, although any part of the contract can be changed at any time--not just every three years--any change can occur only through binding arbitration. Finally, a cost-of-living percentage increase is pegged to an economic index of some kind. (If either side is unhappy with a given year's increase, then it can seek a higher or lower one through binding arbitration.)

That's it. Since we are thinkers, we can bring to bear the strength of our intellect to binding arbitrations in an attempt to win a more just working environment.

Two important questions remain. This is the first question: why would legislators approve such a law? First, they have nothing to lose. The law would not necessarily require them to raise taxes. Secondly, they would be able to make more certain budget projections. Thirdly, the absence of labor unrest in the SSHE institutions makes their re-election more probable since incumbents always are at risk when their constituents are unhappy or feel threatened by unsettling events like strikes.

Would the SSHE board oppose such a law? Given its past objection to binding arbitration, I would guess it would. It consistently opposes binding arbitration primarily because the binding aspect takes the authority to make decisions away from the board. Would legislators be sympathetic to this opposition? I would guess not because legislators are more interested in an enforced peace than in guaranteeing the power of persons with inflated egos.

Here is the second question: would APSCUF support such a law? I don't know, but you can help answer this question. If you like my suggestion, or if you have some modifications to proffer, then I urge you to inform me. If I receive a sufficiently positive response, I'll take it to our delegates and ask them to broach the concept to the APSCUF state assembly.

You can e-mail, voice-mail, send a memo, or see me in person, but I really would like to hear your opinions.

Doug Campbell, Professor
Journalism, Mass Communications
& Philosophy Department
dcampbel@eagle.lhup.edu
Robinson 604, x2184

FUNNY STUFF FROM THE EDITOR

FROM THE MOUTHS OF BABES...

Proverbs

Each child in a class was given the first half of a proverb. Their insight may surprise you...

- Better to safe than...punch a 5th grader.
- Strike while the... bug is close.
- It's always darkest before...daylight saving time.
- Never underestimate the power of...termites.
- You can lead a horse to water but...how?
- Don't bite the hand that...looks dirty.
- No news is...impossible.
- A miss is as good as a...Mr.
- You can't teach an old dog new...math.
- If you lie down with the dogs, you'll...stink in the morning.
- Love all, trust...me.
- The pen is mightier than the...pigs.
- An idle mind is...The best way to relax.
- Where there's smoke there's...pollution.
- Happy the bride who...gets all the presents.

- A penny saved is...not much.
- Two's company, three's...The Musketeers.
- Don't put off till tomorrow what...you put on to go to bed.
- Laugh and the whole world laughs with you, cry and...you have to blow your nose.
- None are so blind as...Helen Keller.
- Children should be seen and not...spanked and grounded.
- If at first you don't succeed...get new batteries.
- You get out of something what you...see pictured on the box.
- When the blind leadeth the blind...get out of the way.

Great Truths about Life that Children have Learned

- No matter how hard you try, you can't baptize cats.
- When your Mom is mad at your Dad, don't let her brush your hair.
- Don't sneeze when someone is cutting your hair.
- You can't hide a piece of broccoli in a glass of milk.
- Don't wear polka-dot underwear under white shorts.

Great Truths about Life that Adults have Learned

- Never ask a 3-year old to hold a tomato.
- Raising teenagers is like trying to nail Jell-O to a tree.
- Families are like fudge...mostly sweet with a few nuts.
- If you can remain calm, you don't have all the facts.
- The more you complain, the longer God lets you live.

FYI...

BABY BOOM AT LHU

LHU has had a recent baby boom. Is it in the water? Are they serving something contagious in the PUB, or Bentley, is there a stork living on campus? It's a mystery.

APSCUF would like to congratulate all those faculty members who are expecting, or have recently had a birth of a child.

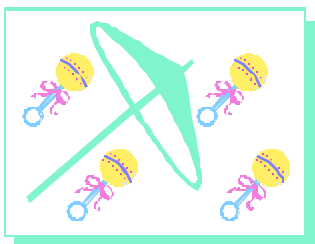
Below are just some of the new babies born to faculty recently:

Faculty Member: *Beth McMahon*
Daughter: *Mary McMahon*
Birth Date: *December 13, 1999*

Faculty Member: *Jane Penman*
Son: *Samuel Allen Penman*
Birth Date: *January 19, 2000*

Faculty Member: *Denine Burkett*
Son: *Owen Nathaniel Burkett*
Birth Date: *January 19, 2000*

Faculty Member: *Phil Huber*
Daughter: *Bella Faye Huber*
Birth Date: *January 15, 2000*



In light of the recent baby boom, APSCUF would like to take this opportunity to remind faculty to report changes in family status or address changes to the PA Faculty Health and Welfare Fund by completing a new enrollment card. Enrollment cards are available in the APSCUF Office.

Also, remember to report your family status and address changes to the Human Resources Office at x2033 to update your medical coverage. You may also want to make changes or adjustments to other forms such as your W-4.

TUITION WAIVERS

Faculty wishing to receive a tuition waiver should contact the Bursar's Office to obtain a form. Submit the completed form to the Human Resources Office.

APSCUF FACULTY INTERNSHIP PROGRAM

The APSCUF Legislative Assembly adopted the Faculty Orientation Internship Program in 1981. This internship is given during the summer months. Application forms are available in the APSCUF Office.

The orientation internship is intended for those APSCUF members with local union responsibilities that are interested in expanding their working knowledge of the union. Internships are for one-week periods. Applications should be submitted at least six weeks prior to commencement of the internship. The charge for hotel and meal expenses will be paid directly by APSCUF. Expense vouchers, up to \$500 per week, should be used for other expenses and travel within the limits of the APSCUF *per diem* and travel policy.

The application form should be completed and sent with supporting materials to the State APSCUF Office.



SAM'S CLUB
MEMBERSHIPS

Anyone interested in joining Sam's Club should forward a check payable to APSCUF in the amount of \$17.15, along with the name, driver's license number and birth date of the cardholder. Cardholders are entitled to bring two guests each visit. Additionally, with each paid membership, you are entitled to another "household" membership card at a cost of only \$10 (which must be processed at Sam's Club. There are Sam's Clubs in both State College (behind the Nittany Mall) and in Muncy (behind the Lycoming Mall).

STATE APSCUF REQUEST

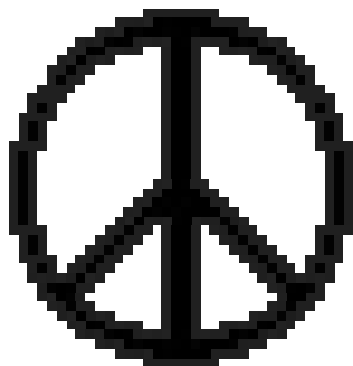
The conference room at the State APSCUF Office has room on its shelves reserved for publications of APSCUF members. If you have a publication or a recording that you have made, or of a group that you direct or conduct, State APSCUF would appreciate having a copy for the shelves. It would be particularly desired to have the donation autographed. It is State APSCUF's desire to enhance the room with the works of faculty to reflect in some measure the academic quality of the State System faculty. Letters of appreciation will acknowledge each gift.

IT'S ALMOST HERE!

SPRING SOCIAL TIME

The Social Committee is pleased to announce the Annual APSCUF Spring Social is almost here. Invitations will be arriving soon. The party will be on February 25 starting at 4:30 at the U.S. Army Reserve Building in McElhattan. (This is the building right next to the jail and across from Restless Oaks.)

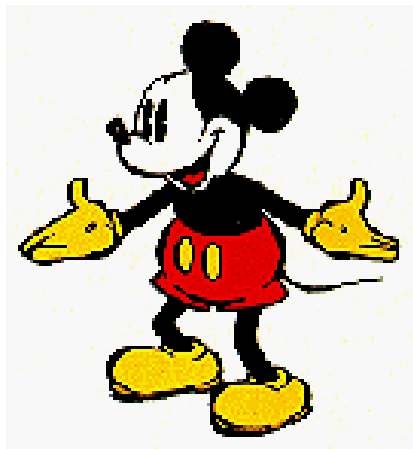
The theme this year will be a 60's and 70's Flashback Party. There will be a DJ, karaoke, contests, and foods that were popular during the 60's and 70's. Those who choose to dress in clothing similar to that worn in the 60's and 70's will be entered into the best dressed contest. Many other activities are being planned.



If you have ideas you would like to share, or if you would like to help in the planning of the Spring Social, please call Cheryl Cartwright in the APSCUF Office at x2231.

DISNEY'S MAGIC KINGDOM CLUB

If you would like to obtain (or renew) a membership in Disney's Magic Kingdom Club, the application process has changed. For those faculty who have the current card – it expired at the end of December, 1999. Please contact Nancy Koutris 1-800-932-0587, ext. 1, and request the new 2000 Magic Kingdom Club membership application. You will be forwarded an application/brochure which will need to be completed and sent to London, KY.



The new membership card and informational materials will be returned to you in approximately three (3) weeks. Plan ahead for your winter or spring breaks. The Magic Kingdom Club membership enables you to obtain discounts at the Parks, special Resort Rooms, merchandise discounts at all the Disney Stores (except Germany), the Disney Catalog and special stores within the complex.

ASK JEFF?

The Newsletter Committee will be devoting a column in this newsletter to help faculty members with questions about procedures, the contract, or information about any aspect of the university. Many of our new faculty members especially may not know whom to ask, or may feel silly for asking simple questions.

Questions will be answered by the appropriate, most knowledgeable Executive Council member.

Questions should be submitted to the APSCUF Office and will remain confidential. It will be appreciated, however, if you submit your name with your original question. The Editor reserves the right to choose which letters will be answered in the newsletter.

ARTICLES WELCOME

All faculty are encouraged to submit Articles and Editorials to the APSCUF Office (Raub Hall) or E-mailed to ccartwri@eagle.lhup.edu by the 15th of each month. Articles on computer disk will be greatly appreciated.

GETTING TO KNOW YOU

NAME: Gregory Lund
DEPT: Recreation
DISCIPLINE: Outdoor Education

BEGINNING AT LHU 1999

FAVORITE SAYING: "Look before you leap, he who hesitates is lost."

FAVORITE MOVIE: *Liar Liar* – Because it makes me laugh.

UNIQUE INTERESTS: Cold weather, snow, ice climbing, snow boarding, scuba diving, mountain biking, spicy food, canoeing.

INTERESTING FACTS: I have had five surgeries. My wife, Sandra, and I enjoy doing all of the activities above together. I am a very quiet (or even shy) when I meet people, but as I get to know them and visa versa, I open up quiet a bit. Many people think I don't like to have fun, those who know me, know otherwise!!

Photo is of me with full "Bug Gear" on a canoe trip in Algonquin Provincial Park, Ontario Canada



NAME: Charles Chen
DEPT: Music
DISCIPLINE: Orchestra Conducting

BEGINNING AT LHU 1999

FAVORITE SAYING: "What's the difference between a viola and a cello? Cello burns longer."

FAVORITE MOVIE: *God Father* – It reveals American History

UNIQUE INTERESTS: Pursuing perfection of everything I do.

INTERESTING FACTS: Loving life.

