

*LHU Health Science Club
Presents a Trip to*

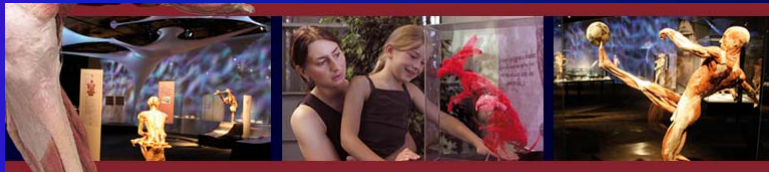


Dates and Times

- Jan. 30th 2010
 - End of the second week of the Spring Semester
 - Will be departing HPB at 6:00am Saturday
 - Returning at HPB at 11:30pm Saturday

The Franklin Institute

- Check in at 10:00am
- Tour Begins at 10:30am
 - Be aware that you may only go through this exhibit once.
 - You are welcome to tour the rest of the Franklin Institute at your leisure throughout the day.

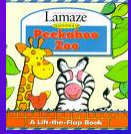


CHOP The Children's Hospital of Philadelphia

Number One in the Nation

"Today, The Children's Hospital of Philadelphia is one of the leading pediatric hospitals and research facilities in the world. Our 150 years of innovation and service to our patients, their families and our community reflect an ongoing commitment to exceptional patient care, training new generations of pediatric healthcare providers and pioneering significant research initiatives."

Members of the HSC will have the option to visit these children in the afternoon.



Book Drive



- HSC will be sponsoring a children's book drive
- All donations will be hand delivered to the patients in CHOP



\$ PRICES \$

Members

- Actively participate in activities, club meetings, and fundraising
- \$35 For the trip to Philadelphia + Body Worlds 2 Exhibit + Franklin Institute + optional Hospital Visitation

Non-Members

- Any person not actively involved in HSC.
- Does not need to be an LHU student.
- \$30 For the trip to Philadelphia
- \$50 For the trip to Philadelphia + Body Worlds 2 Exhibit + Franklin Institute

MONEY IS DUE NO LATER THAN DEC. 8th



QUESTIONS?