

LOCK HAVEN UNIVERSITY OF PA POST-GRADUATION ACTIVITIES OF THE CLASS OF 2006

Each year, the Career Services office conducts a follow-up survey of the most recent graduating class. Information is compiled and published in the Annual Follow-Up Report and provides detailed information, by major, about the status of our graduates. This condensed publication highlights the significant findings from the 2006 study and includes some trends for the ten year period, 1997 – 2006, plus a comparison of the data to the State System’s Alumni Survey results. Readers are referred to the full report for more detailed information.

HIGHLIGHTS OF THE 2006 REPORT

The Class of 2006 includes all students who graduated from Lock Haven University in December 2005, May 2006 and August 2006. Surveys were mailed in November 2006 and again in January 2007. During February and March, phone calls were made to all non-respondents. It is important to note, therefore, that graduates are responding anywhere between three to eleven months following their graduation date. Summarized below are some of the findings of this year’s study.

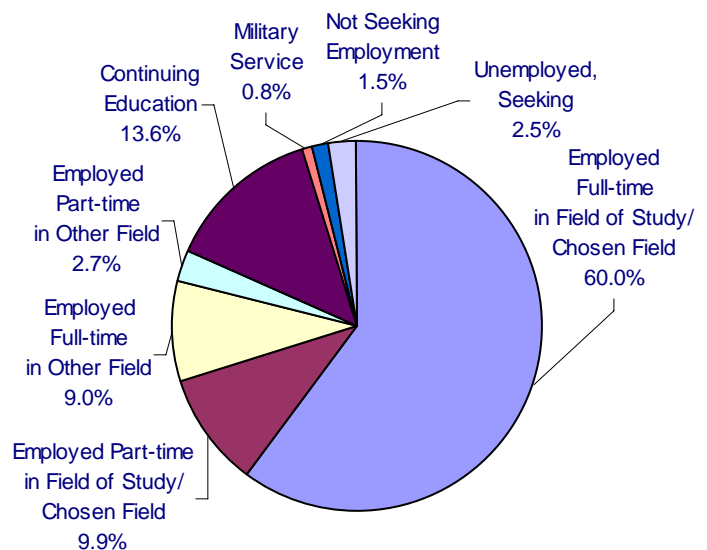
- Of the 934 graduates in the Class of 2006, 730 (78%) responded to the survey.
- Of the 730 responding, 73 (10%) received associate degrees, 72 (10%) master’s degrees, and 585 (80%) bachelor’s degrees.
- 96% are either employed (all categories), continuing their education, or serving in the military.
- Of the 596 graduates employed, 86% indicated that they are employed in their field of study/chosen field.
- 74% of the employed graduates are working in Pennsylvania, a 4% decrease from 2005. Of the 152 graduates employed out-of-state,

those states with 10 or more graduates are: Maryland (25); New Jersey (20); New York (17); Virginia (15); and North Carolina (10).

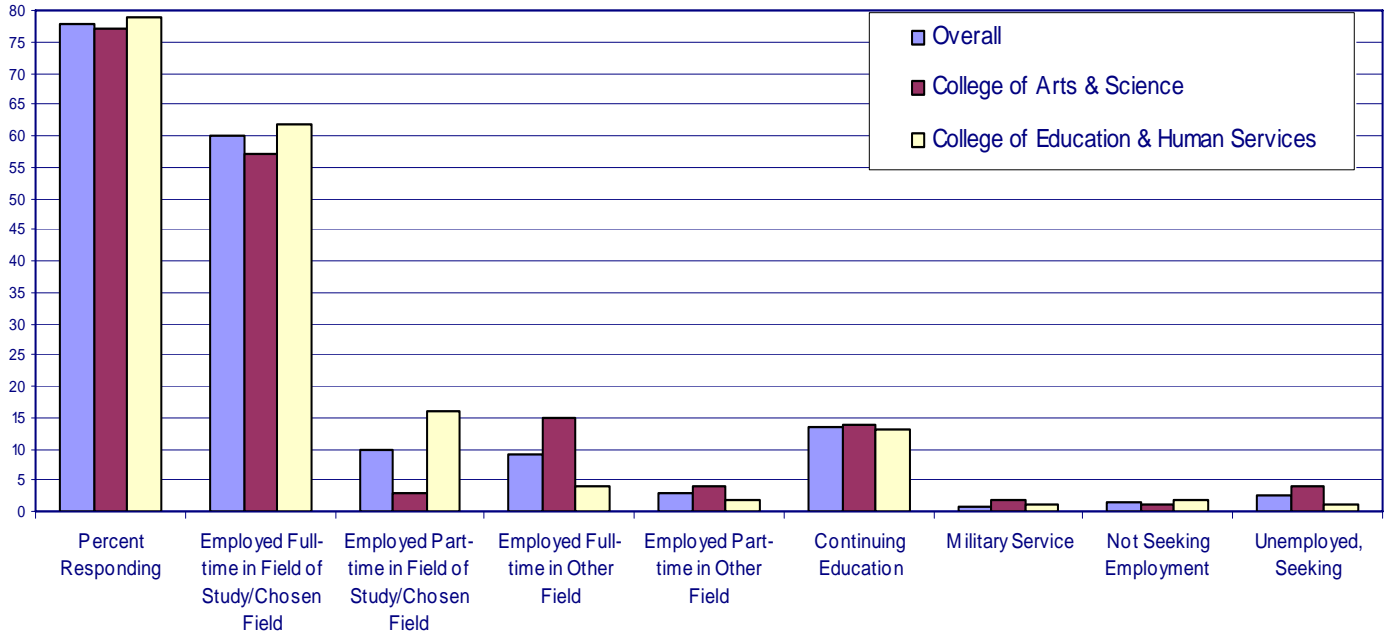
- Of those employed out-of-state, 51 (34%) are education majors (all certification areas). These graduates are teaching in 10 states, Washington DC, and Japan.
- Of the 99 graduates who reported they are continuing their education, 76% are doing so in Pennsylvania, a 4% decrease from 2005.
- Of those continuing their education, 19% are doing so at LHU; 15% are attending other PASSHE schools; and 13% are at one of the campuses or affiliates of Penn State University.
- Health Science continues to have the largest percentage of graduates continuing their education (38%), an increase of 9% from 2005.
- Only 18 of the 730 graduates who responded said they were “unemployed, seeking.”

The pie chart below depicts the post-graduation status of the Class of 2006 based upon information received from 730 graduates.

Post-Graduation Activities

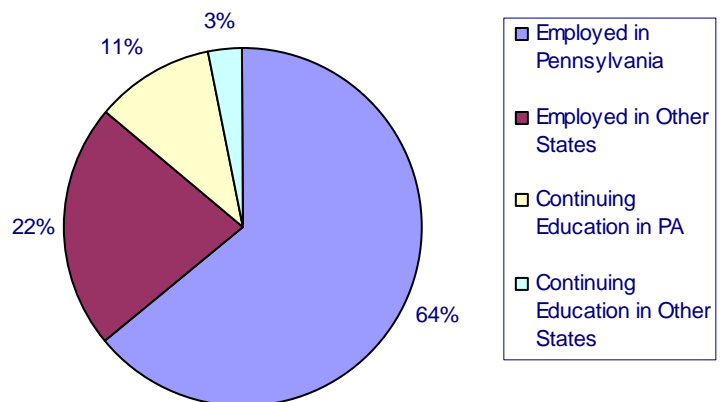


Comparison Between the College of Arts and Science and the College of Education and Human Services



- 78% of the graduates from the College of Education & Human Services reported they were “employed in their field of study/chosen field” (full- or part-time) compared to 60% from the College of Arts & Science.
- Of those graduates continuing their education, the College of Arts & Science saw a 6 % decrease from last year (20% to 14%), while the College of Education & Human Services saw a 4% increase (9% to 13%).
- The percentage of “in-state” activity (employment or continuing education) vs. “out-of-state”, decreased once again this year (by 4%) with 75% in Pennsylvania, and 25% in other states/countries.

Geographical Data of Graduates Employed or Continuing Education



A Comparison Between LHU and PASSHE

In the summer of 2006, an Alumni Survey was conducted by Franklin & Marshall College’s Center for Opinion Research in cooperation with the PASSHE Research Office. A random sample of 2,313 SSHE baccalaureate degree graduates from the Class of 2005 was selected.

The table to the right compares the results of that survey to the results of LHU’s Annual Follow-up Report for the Classes of 2005 and 2006. The LHU data presented in this table includes only baccalaureate degree graduates.

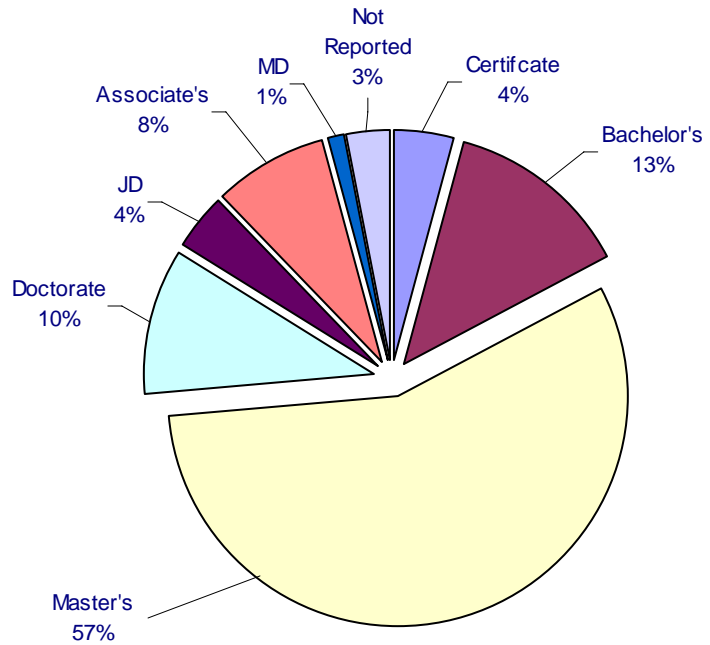
Survey response rates: PASSHE = 63%
 LHU 2005 = 75%
 LHU 2006 = 79%

PASSHE 2005	LHU 2005	LHU 2006	
54%	56%	56%	Employed full-time in field of study
9%	11%	11%	Employed part-time in field of study
18%	9%	11%	Employed full-time in another field
4%	2%	3%	Employed part-time in another field
0%	2%	1%	Military Service
10%	16%	15%	Continuing education
4%	3%	2%	Unemployed, seeking employment
1%	1%	1%	Unemployed NOT seeking employment
82%	75%	72%	Employed in Pennsylvania

GRADUATES CONTINUING EDUCATION

Below is partial list of institutions where graduates are pursuing additional education:

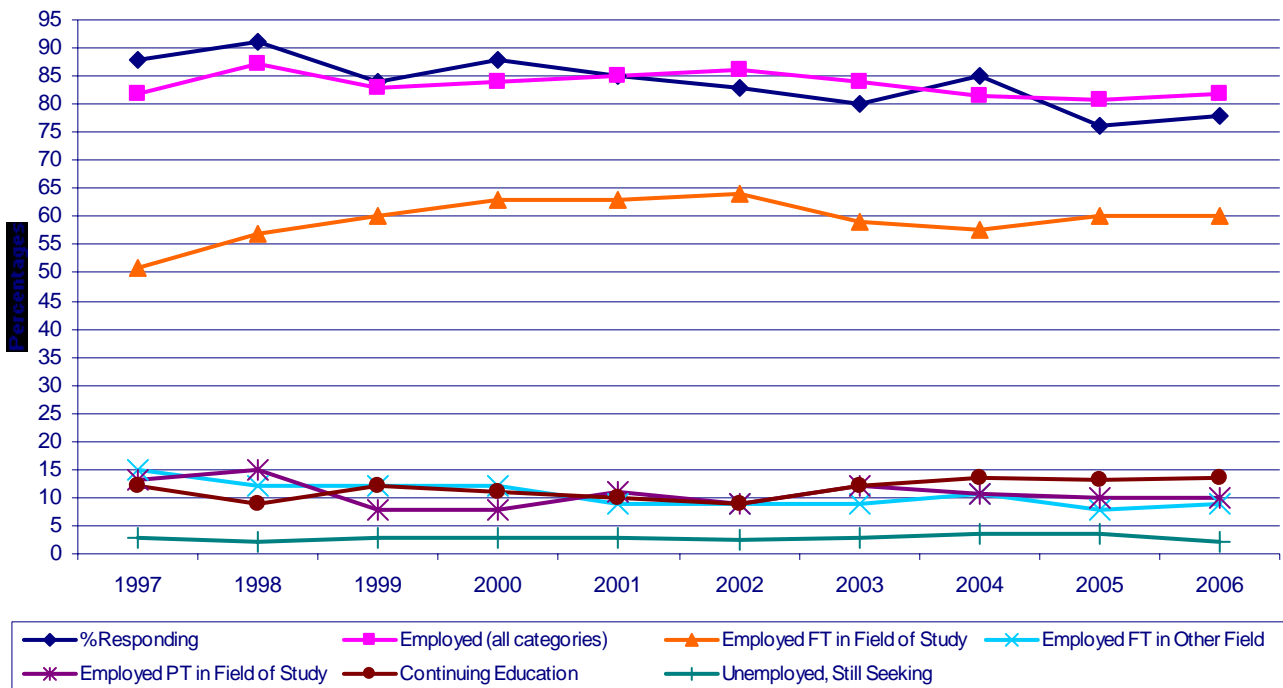
- Arcadia University
- California University of PA
- Case Western Reserve University
- DeSales University
- Dickenson Law School
- Gannon University
- Indiana University of PA
- James Madison University
- Kent State University
- Marywood University
- Michigan State University
- Millersville University of PA
- Ohio University
- Penn State University
- Princeton University
- Shippensburg University of PA
- Thomas Jefferson University
- University of Maryland
- University of Oklahoma
- University of Pittsburgh
- Vermont Law School
- Widener University



Continuing Education by Type

POST-GRADUATION STATUS TRENDS FOR THE YEARS 1997 - 2006

- The results in each category have remained fairly consistent over this ten year period with only slight changes from one year to the next.
- Unemployment of LHU graduates (2%) continues to remain below both the national average of 4.6% and Pennsylvania's average of 4.7%. (*Unemployment rates for 2006 from the Bureau of Labor Statistics.*)



Post-Graduation Status According to Major - Class of 2006

MAJOR	# GRADS	% RESP	FT IN FIELD	FT OTHER FIELD	CONT EDUC	PT IN FIELD	PT OTHER FIELD	MILITARY SERVICE	NOT SEEKING EMPLOY	UNEMP STILL SEEKING	DID NOT RESPOND
Accounting	16	88	13	0	1	0	0	0	0	0	2
Alternative Education	29	66	18	0	0	0	0	0	0	1	10
Applied Geology	2	100	1	1	0	0	0	0	0	0	0
Biology (all categories)	10	90	4	1	2	0	1	0	0	1	1
Biology-Chemistry (all categories)	15	93	8	1	3	0	0	1	1	0	1
Business Administration (all categories)	40	68	24	0	2	0	1	0	0	0	13
Chemistry	5	40	1	0	1	0	0	0	0	0	3
Communication Media	26	73	9	2	3	3	2	0	0	0	7
Communication Studies	7	71	0	1	3	0	1	0	0	0	2
Computer Info Science	5	80	3	0	0	0	0	1	0	0	1
Computer Science	6	83	5	0	0	0	0	0	0	0	1
Criminal Justice (AA)	5	100	0	0	2	1	0	0	0	2	0
Criminal Justice (BS)	66	79	36	11	1	0	2	0	0	2	14
Early Child/Special Educ	1	100	0	0	0	1	0	0	0	0	0
Early Childhood Educ	19	63	10	0	1	1	0	0	0	0	7
Economics	2	100	0	1	0	0	0	0	0	1	0
Elementary Education	83	84	34	1	1	28	1	0	5	0	13
Elementary/Special Educ	5	100	4	0	0	0	1	0	0	0	0
English – Writing	13	85	3	5	2	1	0	0	0	0	2
Environmental Geology	1	100	1	0	0	0	0	0	0	0	0
French	2	0	0	0	0	0	0	0	0	0	2
General Studies	6	50	1	0	2	0	0	0	0	0	3
Geography	3	100	1	1	1	0	0	0	0	0	0
German	1	0	0	0	0	0	0	0	0	0	1
Health & Physical Ed (all categories)	47	74	24	1	1	6	1	1	0	1	12
Health Sciences (all categories)	69	91	16	3	38	2	3	0	1	0	6
Healthcare Professions (AAS)	7	86	3	0	2	1	0	0	0	0	1
History	5	80	1	1	2	0	0	0	0	0	1
International Studies	10	90	3	5	0	0	0	0	0	1	1
Journalism & Mass Comm.	14	64	4	4	0	0	0	0	0	1	5
Liberal Arts (MLA)	9	44	2	0	1	0	0	0	1	0	5
Management (AAS)	6	83	2	1	1	0	1	0	0	0	1
Management (BS) (all categories)	2	50	1	0	0	0	0	0	0	0	1
Management Info Systems	4	75	0	1	1	0	0	0	0	1	1
Management of Technology	3	100	2	0	0	0	0	0	0	1	0
Mathematics	5	60	1	1	0	0	0	0	0	1	2
Music	1	100	1	0	0	0	0	0	0	0	0
Nanotechnology – Biology (AAS)	2	100	0	0	1	0	0	1	0	0	0
Natural Science (all categories)	3	100	2	0	0	0	0	1	0	0	0
Nursing	62	79	37	1	2	8	0	0	0	1	13
Philosophy	1	100	0	1	0	0	0	0	0	0	0
Physician Assistant	38	79	28	0	0	0	0	0	1	1	8
Physics (all categories)	4	75	2	0	1	0	0	0	0	0	1
Political Science	7	100	2	2	3	0	0	0	0	0	0
Psychology	50	74	23	2	7	3	1	0	1	0	13
Recreation Management (all categories)	42	83	18	6	7	3	1	0	0	0	7
Secondary Education – Biology	7	71	4	0	0	0	1	0	0	0	2
Secondary Education – Chemistry	1	100	1	0	0	0	0	0	0	0	0
Secondary Education – French	1	100	1	0	0	0	0	0	0	0	0
Secondary Education – Math	10	90	7	1	0	1	0	0	0	0	1
Secondary Education – Physics	1	0	0	0	0	0	0	0	0	0	0
Secondary Education – Social Studies	19	84	7	1	0	8	0	0	0	0	3
Secondary Education – Spanish	2	50	0	0	0	1	0	0	0	0	1
Secondary Education- English	8	63	2	1	0	2	0	0	0	0	3
Social Work	33	79	18	1	4	0	2	0	1	0	7
Sociology	6	60	2	1	0	0	0	0	0	0	3
Spanish	1	0	0	0	0	0	0	0	0	0	1
Special Education	23	74	16	0	1	0	0	0	0	1	6
Sport Administration	27	78	10	4	1	2	1	1	0	2	6
Studio Arts	4	75	1	1	1	0	0	0	0	0	1
Surgical Technology	1	100	1	0	0	0	0	0	0	0	0
Teaching and Learning	28	68	19	0	0	0	0	0	0	0	9
Theatre	3	100	1	2	0	0	0	0	0	0	0
Totals	934	78	438	66	99	72	20	6	11	18	204