



**National Survey
of Student Engagement**

Lock Haven University

Multi-Year Benchmark Report

August 2008



For institutions that have participated in NSSE across multiple years, this *Multi-Year Benchmark Report* presents recalculated and comparable benchmark scores by year so that patterns of change or stability are discernible. It also provides statistics such as *number of respondents*, *standard deviation*, and *standard error* so that shorthand mean comparison tests can be calculated. This report is necessary because improvements and modifications have been made over time to NSSE survey items, the construction of benchmarks, and the production of institutional reports, making multi-year analysis of NSSE data more complex. Specifically, the following issues are relevant:

- All items in question 7 were rescaled in 2004, making it untenable to compare newer results on these items with those of 2003 and earlier. Therefore, it is not possible to compare the 2004-2008 Enriching Educational Experiences benchmark with prior years (2001-2003). An alternate version of the Student-Faculty Interaction benchmark – labeled ‘SFC’ – is also provided with the ‘research with faculty’ item removed, allowing this benchmark to be compared with prior years (2001-2003).
- In 2004 NSSE changed the way benchmarks were calculated, requiring that benchmarks prior to 2004 be recalculated to more accurately compare institutional performance across years.
- Scores from NSSE 2000 are not included because several significant changes were made to the survey instrument and benchmarks beginning in 2001, thus making year-to-year comparisons unsuitable.
- The types of respondents used to develop institutional estimates have been refined in recent years, making direct comparisons of reported benchmarks over the years potentially less stable.

This report has three main parts: (a) a table of *data quality indicators* (p. 3), which provides a quick reference to important statistics for each year’s participation, (b) *multi-year charts*, and (c) *detailed statistics*. Key terms and features of (b) and (c) are described below using data from the fictional “NSSEville State University.”

For more information and recommendations for analyzing NSSE data over time, consult the *Multi-Year Data Analysis Guide*: www.nsse.iub.edu/pdf/2008_Institutional_Report/Multiyear_Data_Guide.pdf.

Key Terms and Features in this Report

Y-Axis

Benchmarks are computed on a 0 to 100 scale, however nearly all institutional scores are between the y-axis values of 15 and 85.

Benchmark Score

The benchmark score is the weighted average of the student-level scores, using only randomly sampled students from each year’s data.

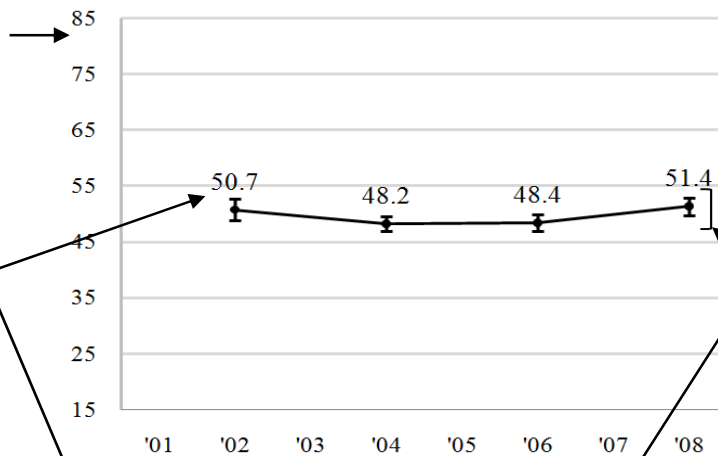
n

Unweighted number of respondents represented in the data.

SEM

Standard error of the mean is how much a score based on a sample may differ from the true population score. *SEM* is used to compute confidence intervals.

Level of Academic Challenge (LAC)



Multi-year charts
appear on pages 4 & 6.

Error Bars/Confidence Intervals

Error bars around each benchmark score show the upper and lower bounds of the 95% confidence interval (mean +/- 1.96 * SEM), a range of values 95% likely to contain the true population score. "Upper" and "Lower" limits are reported in the detailed statistics tables. Where confidence intervals do not overlap between years, a statistically significant difference ($p < .05$) is likely to be present.

Year

All NSSE administration years are listed regardless of participation.

Multi-year detailed statistics
appear on pages 5 & 7.

	2001	2002	2003	2004	2005	2006	2007	2008
LAC	50.7	48.2	48.4	51.4				
n	179	405	303	307				
SD	12.3	12.1	12.3	11.8				
SEM	.92	.60	.71	.67				
Upper	52.5	49.4	49.8	52.7				
Lower	48.9	47.0	47.0	50.1				

SD

Standard deviation, the average amount by which students' scores differ from the mean.

Some NSSE administrations yield more precise population estimates than others. The values in this table were drawn from the *Respondent Characteristics* reports for each NSSE administration. An important early step in conducting a multi-year analysis is to review the quality of your data for both first-year and senior respondents in each year.

Year ^a	Mode ^b	Response Rate ^c		Sampling Error ^d		Number of Respondents ^e	
		FY	SR	FY	SR	FY	SR
2001							
2002							
2003	Paper	50%	34%	7.1%	8.4%	163	106
2004							
2005	Paper	38%	43%	8.1%	7.3%	127	138
2006							
2007							
2008	Web	34%	42%	3.9%	4.3%	426	303

^a All NSSE administration years since 2001 are listed regardless of participation.

^b Modes include *Paper* (students receive a paper survey and the option of completing a Web version), *Web* (students receive all correspondence by e-mail and complete the Web version), and *Web+* (students initially invited to participate via e-mail; a subgroup of nonrespondents receive paper surveys).

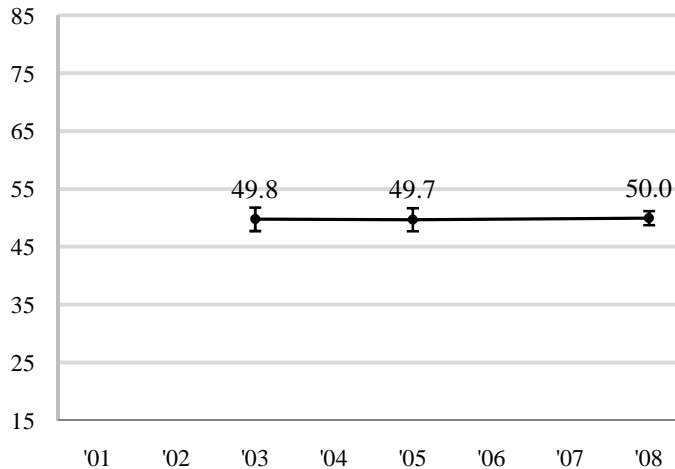
^c Response rates (number of respondents divided by sample size) were adjusted for ineligibility, nondeliverable mailing addresses, and students who were unavailable during the survey administration. Before 2003, response rates were not calculated separately by class so overall response rates are reported.

^d Sampling error gauges the precision of estimates based on a sample survey. It is an estimate of how much survey item percentages for your respondents could differ from those of the entire population of students at your institution. Data with larger sampling errors (such as +/-10%) need not be dismissed off hand, but any results using them should probably be interpreted more conservatively.

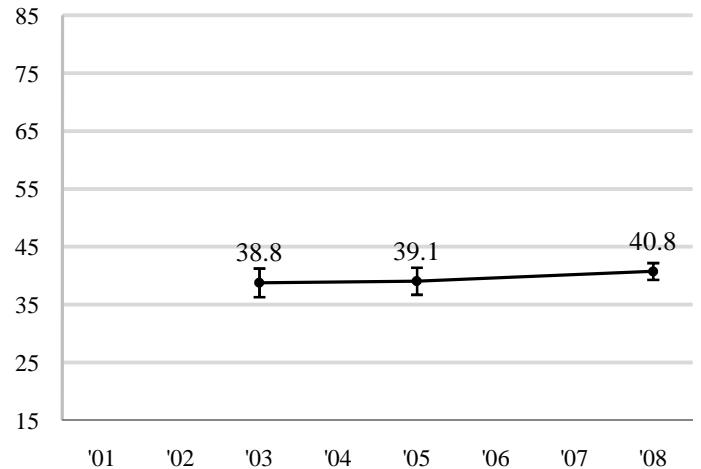
^e This is the original count used to calculate response rates and sampling errors for each administration's *Respondent Characteristics* report. This number includes all randomly sampled students. From 2001 to 2005 it may also include targeted oversamples. For this reason, the counts for 2001 to 2005 may not match those given in the detailed statistics on pages 5 and 7.

First-Year Students

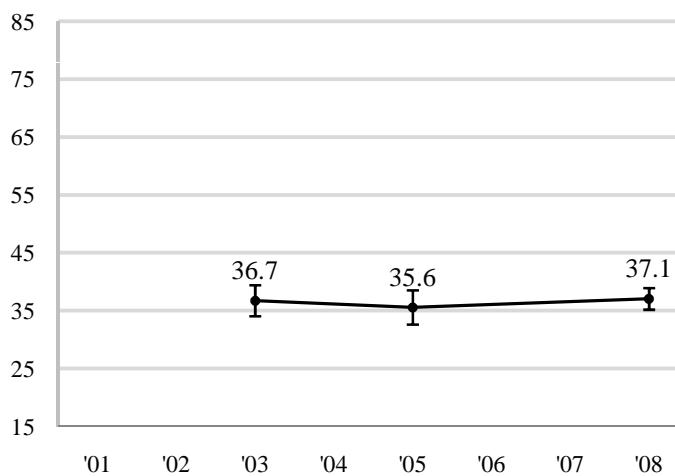
Level of Academic Challenge (LAC)



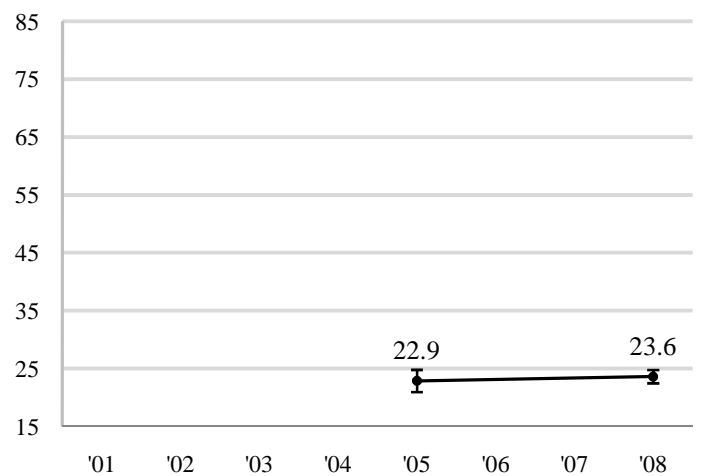
Active and Collaborative Learning (ACL)



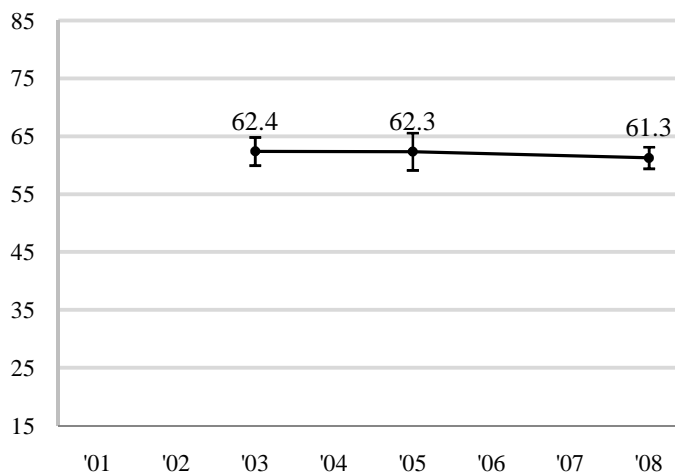
Student-Faculty Interaction (SFC)^b



Enriching Educational Experiences (EEE)^c



Supportive Campus Environment (SCE)



Notes:

- a. Recalculated benchmark scores are charted for all years of participation since 2001. See page 5 for detailed statistics. For more information and recommendations for analyzing multi-year NSSE data, consult the *Multi-Year Data Analysis Guide*: www.nsse.iub.edu/pdf/2008_Institutional_Report/Multiyear_Data_Guide.pdf.
- b. For institutions with 2001-2003 data, due to a change to the 'research with faculty' item in 2004, 'SFC' (the alternate version of 'SFI' that does not include that item) is charted on this page. Statistics for both versions are provided on page 5.
- c. 2001-2003 'EEE' scores are not provided because these scores are not comparable with those of later years; response options for several 'EEE' items were altered in 2004.

		First-Year Students							
		<i>2001</i>	<i>2002</i>	<i>2003</i>	<i>2004</i>	<i>2005</i>	<i>2006</i>	<i>2007</i>	<i>2008</i>
Level of Academic Challenge	LAC			49.8		49.7			50.0
	n			155		122			396
	<i>SD</i>			12.9		11.2			12.4
	<i>SEM</i>			1.04		1.01			.62
	Upper			51.8		51.7			51.2
	Lower			47.7		47.7			48.7
Active and Collaborative Learning	ACL			38.8		39.1			40.8
	n			156		126			420
	<i>SD</i>			15.7		13.4			15.1
	<i>SEM</i>			1.26		1.20			.74
	Upper			41.3		41.4			42.2
	Lower			36.3		36.7			39.3
Student Faculty Interaction^b	SFC			36.7		35.6			37.1
	n			156		123			400
	<i>SD</i>			17.1		16.8			19.0
	<i>SEM</i>			1.37		1.51			.95
	Upper			39.4		38.5			38.9
	Lower			34.1		32.6			35.2
	SFI			-		30.3			32.0
	n			-		123			395
	<i>SD</i>			-		15.0			16.8
	<i>SEM</i>			-		1.35			.84
	Upper			-		33.0			33.7
	Lower			-		27.7			30.4
Enriching Educational Experiences^c	EEE			-		22.9			23.6
	n			-		122			383
	<i>SD</i>			-		10.8			11.4
	<i>SEM</i>			-		.98			.58
	Upper			-		24.8			24.8
	Lower			-		21.0			22.5
Supportive Campus Environment	SCE			62.4		62.3			61.3
	n			155		121			373
	<i>SD</i>			15.4		18.1			18.4
	<i>SEM</i>			1.24		1.64			.95
	Upper			64.8		65.6			63.1
	Lower			59.9		59.1			59.4

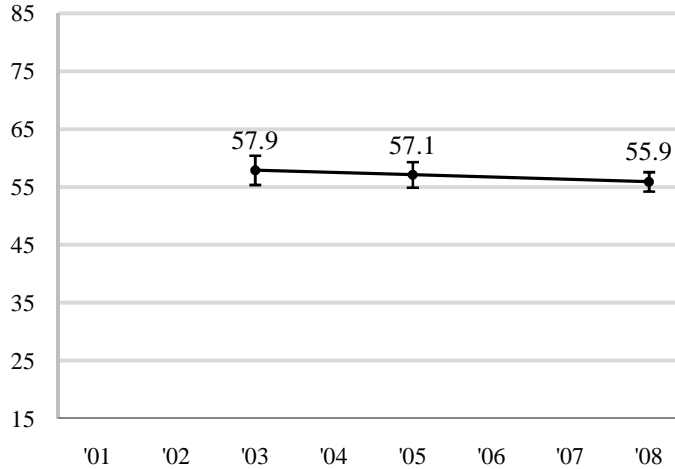
^a n=number of respondents; *SD*=standard deviation; *SEM*=standard error of the mean; Upper/Lower=95% confidence interval limits

^b For institutions with 2001-2003 data, due to a change to the 'research with faculty' item in 2004, statistics for 'SFC' (the alternate version of 'SFI' that does not include that item) are reported along with the original 'SFI'.

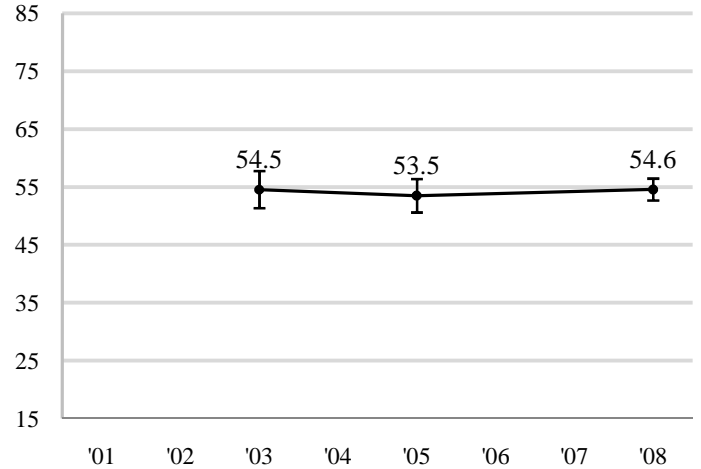
^c 2001-2003 'EEE' scores are not provided because these scores are not comparable with those of later years. This is because response options for several of 'EEE' items were substantially altered in 2004.

Seniors

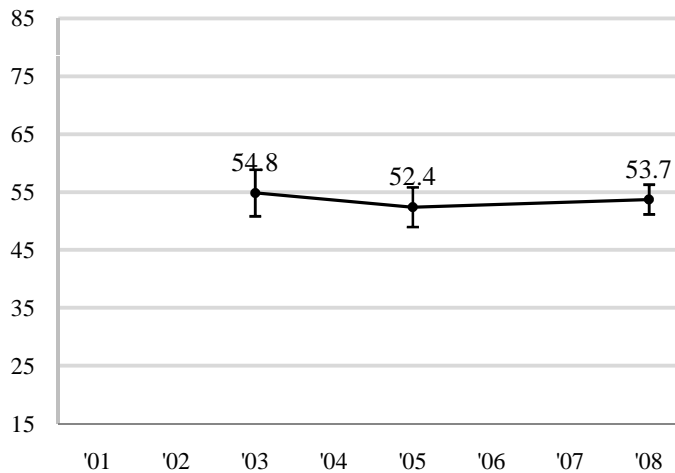
Level of Academic Challenge (LAC)



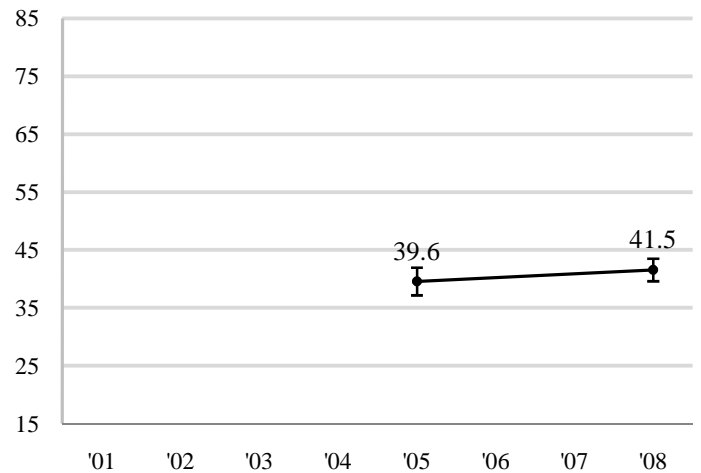
Active and Collaborative Learning (ACL)



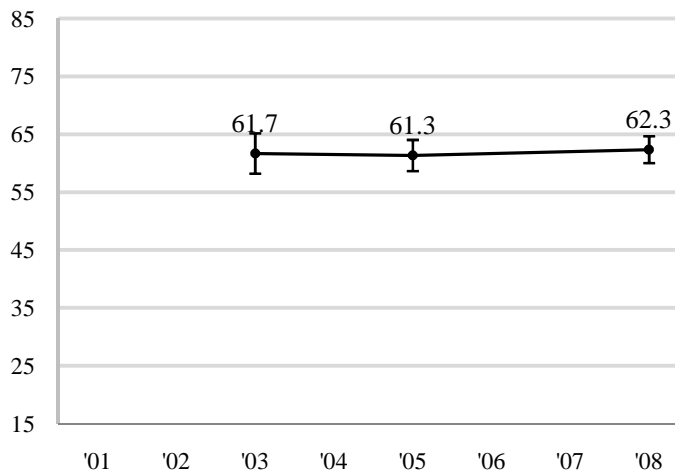
Student-Faculty Interaction (SFC)^b



Enriching Educational Experiences (EEE)^c



Supportive Campus Environment (SCE)



Notes:

- a. Recalculated benchmark scores are charted for all years of participation since 2001. See page 7 for detailed statistics. For more information and recommendations for analyzing multi-year NSSE data, consult the *Multi-Year Data Analysis Guide*: www.nsse.iub.edu/pdf/2008_Institutional_Report/Multiyear_Data_Guide.pdf.
- b. For institutions with 2001-2003 data, due to a change to the 'research with faculty' item in 2004, 'SFC' (the alternate version of 'SFI' that does not include that item) is charted on this page. Statistics for both versions are provided on page 7.
- c. 2001-2003 'EEE' scores are not provided because these scores are not comparable with those of later years; response options for several 'EEE' items were altered in 2004.

Lock Haven University

Seniors

		2001	2002	2003	2004	2005	2006	2007	2008
Level of Academic Challenge	LAC			57.9		57.1			55.9
	n			99		135			279
	SD			12.8		13.1			14.2
	SEM			1.29		1.13			.85
	Upper			60.4		59.3			57.6
	Lower			55.3		54.9			54.2
Active and Collaborative Learning	ACL			54.5		53.5			54.6
	n			100		136			300
	SD			16.3		17.2			16.7
	SEM			1.64		1.48			.96
	Upper			57.7		56.4			56.5
	Lower			51.3		50.6			52.7
Student Faculty Interaction^b	SFC			54.8		52.4			53.7
	n			100		135			284
	SD			20.5		20.3			22.1
	SEM			2.06		1.75			1.31
	Upper			58.9		55.8			56.3
	Lower			50.8		49.0			51.1
	SFI			-		47.0			48.9
	n			-		135			281
	SD			-		21.0			21.7
	SEM			-		1.81			1.29
	Upper			-		50.6			51.4
	Lower			-		43.5			46.4
Enriching Educational Experiences^c	EEE			-		39.6			41.5
	n			-		133			271
	SD			-		14.1			16.3
	SEM			-		1.22			.99
	Upper			-		41.9			43.5
	Lower			-		37.2			39.6
Supportive Campus Environment	SCE			61.7		61.3			62.3
	n			97		132			272
	SD			17.5		15.8			19.4
	SEM			1.78		1.37			1.18
	Upper			65.2		64.0			64.6
	Lower			58.2		58.6			60.0

^a n=number of respondents; SD=standard deviation; SEM=standard error of the mean; Upper/Lower=95% confidence interval limits

^b For institutions with 2001-2003 data, due to a change to the 'research with faculty' item in 2004, statistics for 'SFC' (the alternate version of 'SFI' that does not include that item) are reported along with the original 'SFI'.

^c 2001-2003 'EEE' scores are not provided because these scores are not comparable with those of later years. This is because response options for several of 'EEE' items were substantially altered in 2004.