



Point and Click

The Libraries' Information Connection

Jessica R. Wilhoite, Editor
Volume 1, Issue 1

Heart of the Haven

Tara Lynn Fulton, Director

What's Inside?

- What's new in the library?
- Department focus: Archives
- New and Improved Pilot.
- New Food and Drink Policy
- FirstSearch
- Library of first or last resort?
- Department Liaison Listing
- Clearfield Corner

Stevenson Library

Lock Haven University
401 North Fairview Street
Lock Haven, PA 17745
(570) 893-2309

www.lhup.edu/library.home/htm

Clearfield Campus Library

Lock Haven University
119 Byers Street
Clearfield, PA 16830
(814) 765-0620

www.lhup.edu/~jfloor/

We almost chose "Heart of the Haven" as the title for the libraries' newsletter, because academic libraries have been referred to metaphorically as "the heart of the university" for decades.

As we enter this new century, many people speculate that the library will wither away, as digitization replaces print and therefore also eclipses the need for a massive structure to house those volumes. If the only purpose of the library was to store potentially useful chunks to nourish the campus, then the library would have been dubbed "the fat cells of the university!". No, the Stevenson and Clearfield libraries do not fear that this era of economic dieting for public higher education will trim us right out of existence. On the contrary, the gradual shift to an online information society provides new potential and new challenges to "the heart of the university". Our mission has always been and continues to be the selection, organization, dissemination and preservation of all forms of knowledge and information.

Within that broad mission, the academic library in fact plays many diverse roles:

- To a first year student we are that frightening place that she should learn to use, but she has neither the self-confidence nor skills to do so without faculty urging and support.
- To a residence hall dweller we are a quiet place to study, or a place to meet with teammates on a group project.
- To a philosophy major we are his "laboratory", where ideas can be discovered, cogitated upon, and combined in new ways.
- To the distance education student, we are a welcoming alternative to floundering around in internet search engines.
- To a scientist we represent access to databases of the latest research findings and a document delivery service.

- To faculty teaching critical thinking and information literacy, we are a resource for designing projects and for helping students build their skills.
- To the new faculty members we are the place to brush up on those areas they now have to teach, but which were not their focus in graduate study.
- To administrators, we are a collection of professionals who have a broad understanding of needs of all the disciplines, who tend to be diplomatic, and who have fine planning and organizational skills, useful for service in university-wide committees.
- To alumni we are a place they recall fondly - a place in which they spent a lot of time and where helpful librarians saved them for scratching a somewhat esoteric topic.
- To the community we are a potential resource for writers, scholars, high school science project creators, and genealogists.

If you have been in the libraries lately, you know that both are teeming with activity. We are working very hard to create an environment (in the building and on the web) where students and faculty in particular feel encouraged to explore the wealth of knowledge and information available to them, and we are committed to being your partners in that exploration. We truly feel like the heart of the university!

So if you need some new energy, need a fresh way to approach your teaching/learning goals, just send us a message and we'll do our best to pump some oxygen and nutrients your way. This newsletter is one of our attempts to share information and get a dialogue going about how the "heart of the university" can best serve the campus. We hope you enjoy it.

What's New in the Library?

Susan Hanna

What's New?

- Reading areas
- Paperback book collection
- Beanbag chairs
- E-mail terminal
- Announcement board



During the last few months you may have noticed a change of atmosphere at Stevenson Library. Lock Haven University has a new Director of Library Services, Ms. Tara Lynn Fulton.

Tara, as she prefers to be called, has come to us from nearby Bucknell University's Bertrand Library. At Bucknell, Tara held the shared position of Associate Director of Library and Information Services. Tara brings to LHU lots of new and innovative ideas. You may notice a bit more of a contemporary approach to our library services.

As you walk in through the main entrance, the first item of interest is a large **whiteboard** standing tall for all to read. Information is colorfully posted with upcoming events, points of interest and policy changes. Walk a few more steps from the entryway into the reference area to find a computer designated for **e-mail**. Now you can make a quick check on those important messages.

Next to the e-mail terminal is a **suggestion box**. We value your opinions. If you feel you have a great idea to improve the way we do things at Stevenson, fill out a suggestion form. We will gladly get back to you for further discussion, at your request.

There are two separate **reading areas** with a more 'homey' setting on the first floor. Sit down, prop your feet up on a footstool and relax while you sift through the pages of a reference book.

Or just sit, relax, and enjoy the beautiful view of the new campus pergola. You will also find a small collection of **paperback books** located in one of the reading areas. Students, faculty and staff have donated these books.

For the young at heart, four very large **beanbag chairs** have been placed on the second floor. You can find them in Alcove 204. This is a perfect area to kick off the shoes and curl up with a book or take that 20 minute catnap before class. If morning is your favorite time of day, check out the informal setting on the third floor. This is the place to study while you sip your coffee and feel the warm sunshine on your back.

Recently a **television** was placed near the circulation and reference area during coverage of the 2000 Presidential Election. Many library users stopped briefly to watch the continuing updates of the election results. This may be more common in the future to keep everyone posted about headline new events.

It is our goal for every library user to enjoy their visit to the library whether it is for research, to type a paper, or to find a comfortable place to study.

Department Focus:

University Archives

Caryn Carr

This semester we are pleased to welcome, Kristin Tilney as our new Student Archivist. Kristin is a freshman with a double major in Early Childhood and Special Education. She joins Professor Caryn J. Carr, Archivist and Adam Zimmerman, Student Archivist as part of the Archives Team.

Our University Archives is made up of collections including our rare and valuable Treasury

Room Collection, masters theses, minutes of the Board of Trustees, yearbooks, LHU bulletins, class directories, The Philpot's Collection, oral histories, copies of program and Middle States reviews and other University memorabilia.

Due to the one-of-a-kind, delicate nature of these materials, the Archives is available by appointment only. Some of the materials within the collection cir-

culate, such as LHU Yearbooks, historical college bulletins, and some Treasury Room materials.

If you have an interest or a project that would benefit from the use of these materials, please call Professor Caryn J. Carr, University Archivist, at extension 2489 or email ccarr@lhup.edu for an appointment.

From the Archives:

*Adam Zimmerman,
Student Archivist*

1927-1974 Colors were Maroon and Grey.

1975-2000 Colors are Crimson and White.

Our mascot has always been the Eagle.

New and Improved Pilot

Caryn Carr

This has been a very active semester for the Keystone Library Network and the Pilot Library System. The week before fall semester started, a beta version of Pilot was made available to the library. This included new staff software as well as a face-lift for Pilot.

During this semester we have seen three software upgrades and multiple patches to this software. These changes will allow us to provide the LHU campus community with the ability to plan for new revolutionary services. These services include direct borrowing of Library materials between members of the Keystone Library Network, electronic reserves, and new interlibrary loan capabilities.

What will these services provide? The direct borrowing will allow you to borrow books directly from other libraries within the Keystone Library Network (KLN). The KLN is comprised of all the schools within the Pennsylvania State System of Higher Education and the Pennsylvania State Library.

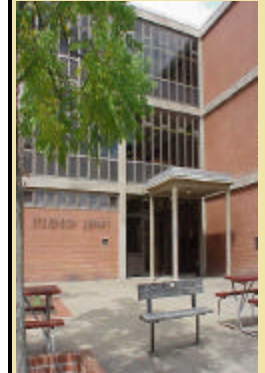
As these new services become available you will be able to read about them in future issues of Pont and Click. The new interlibrary loan software will allow you to place some of your own interlibrary loan requests directly. This should speed turn around time on these materials.

Electronic reserves will allow the library to scan faculty reserve articles. These will be saved on a computer with a link to the listing in Pilot.

When you find the reserve material you want and it is in electronic format, you will be able to double click on the listing in Pilot and it will take you directly to the reserve material requested. You can read it online, again without having to come into the library. These services are being planned for the upcoming semesters. A beta test of the direct borrowing is starting between several of our sister SSHE schools and the State Library. When this becomes available to LHU, we will have a big announcement. In the mean time being involved with testing software is not without its frustrations.

You may have noticed that Pilot was not available several times this semester for short periods of time. There are “bugs” in the Pilot software that are causing a problem with ‘simultaneous searching’. Be assured that we are aware of the quirks in the software and are working with our software provider, Endeavor Library Information Systems, to correct them.

We are very excited about all of the changes being brought about by having the KLN use the same online catalog. More and more we see ourselves as part of a great state system of higher education using economies of scale to provide the very best and most up-to-date library services for our students and faculties. Should you have any questions or problems using or accessing Pilot and the KLN databases, on campus or off, please contact Professor Caryn J. Carr, at 893-2489 or ccarr@lhup.edu.



If you cover it you can drink from it. Snacking is no longer a mission impossible but a privilege.

New Food and Drink Policy Adopted

Bernadette Heiney

Are you one of those people that have sneaked food into Stevenson Library, hid in one of its many carrels, and with a slightly guilty conscience, downed your bagel and granola bar before anyone could catch you? Well, those days are over. In an effort to provide a more relaxed and comfortable atmosphere, we have introduced a new, kinder and gentler, food policy. Small snacks, such as candy and chips, as well as covered drinks,

are now permitted in most areas. Meals, such as take out Chinese and pizza, should still be eaten elsewhere. Food and drink is still prohibited at computer workstations, the library’s archive, the photocopiers, the microfiche/film readers, and the audiovisual equipment.

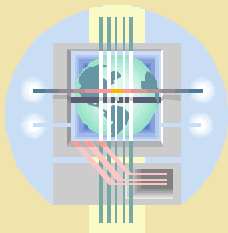
The key to success will be the willingness of library users toward responsible eating.

We have placed trashcans throughout the library to assist with this initiative. The new policy asks that users be considerate of others in avoiding foods with strong aromas, and cleaning up after themselves. So now, we are happy to say, you can boldly walk through our doors with your snacks and covered drinks in plain view, without any worries that your food will be confiscated!





*Stevenson Library
now offers even
more powerful
online searching.*



*“Users can extend
their research
beyond our
library...”*

FirstSearch

Rick Lilla

A new version of the OCLC FirstSearch service is now available promising even more powerful online searching to ensure that library users will have access to the information they need.

Users can extend their research beyond our library using FirstSearch. Students can find information for term papers, theses, science fairs and book reports. Teachers can find education material. You can find information on everything from aardvarks to zucchini.

Designed to make searching simple yet sophisticated enough for all library users, FirstSearch offers options for receiving full text journal articles, as well as links to the OCLC Interlibrary Loan service, which provides users with access to materials from libraries throughout the world. FirstSearch continues to be the fastest growing reference service in the library community.

The service enables library users to search multiple databases under a single, easy to use interface, without any online searching experience or computer training. You can execute simple to in-depth searches, compile comprehensive bibliographies, and locate hard-to-find materials and order them online. For some databases, full-text documents are available and can be viewed online, printed, downloaded, or e-mailed.

What makes FirstSearch so valuable and unique is WorldCat, the world's largest and most comprehensive

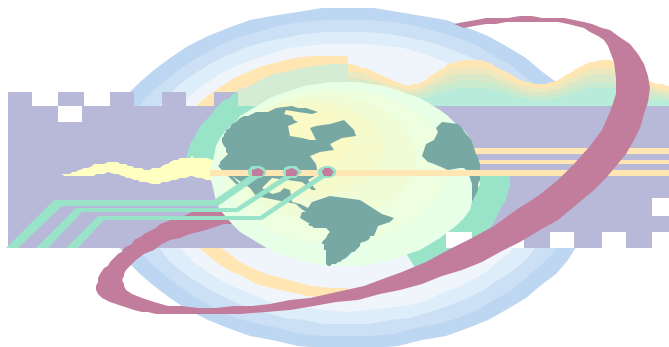
computerized card catalog consisting of more than 42 million records, contains the merged catalogs of libraries around the world. WorldCat contains records for all library resources: books, serials, visual materials, maps, mixed materials, sound recordings, musical scores, and computer files. The database is updated daily online, making resources that no single library could possess available to libraries and users.

Library users can access fifty-eight databases, including WorldCat, the world's largest database of information that is also able to indicate if your library owns the particular material, as well as which other libraries own it. Library users then know if they can find it in their library or request it through an interlibrary loan. New FirstSearch features include cross-databases searching and three levels of searching sophistication to allow all the library's users to access information.

Users can access the FirstSearch database by visiting the library's website, from any Internet ready terminal on campus, or at home. The website may be visited at:

www.lhup.edu/library/home.htm

FirstSearch is a service of the OCLC Online Computer Library Center. Headquartered in Dublin, Ohio, OCLC is nonprofit, membership, computer library service and research organization whose computer network and services link more than 34,000 libraries in 67 countries and territories.



Stevenson Library: Library of First or Last Resort?

Marsha Ann Tate

Where is the first place to turn when you need books or journals for a research paper? Surprisingly, for many Lock Haven University students, the answer doesn't seem to be Stevenson Library. Although the library may offer a quiet place to study, it's not necessarily perceived as the preferred library for doing "serious research". Nonetheless, before you make your travel plans to another library, you might want to consider the following points:

First, Stevenson Library's resources and services are selected to meet the specific needs of Lock Haven's academic programs. For example, access is provided to a number of specialized indexes covering subjects such as education (ERIC), social work, (Social Work Abstracts) as well as nursing and allied health (CINAHL) just to name a few. The library also subscribes to the EBSCOHost and InfoTrac databases which are ideal for locating magazine and journal articles on a wide array of subjects. Moreover, a number of databases are accessible via the Web to any current LHU student with a valid ID card.

A complete listing of accessible databases arranged alphabetically and by department is available at our website at:

www.lhup.edu/libr ary/home.htm

Secondly, librarians at LHU are responsible for specific subject areas based upon their

backgrounds and expertise. Therefore, if you have a research question requiring specialized knowledge, there is often a librarian familiar with your subject with whom you can consult. Among other things, s/he will be able to help you determine whether materials not owned by Stevenson Library may be available through alternate means such as interlibrary loan. In addition, a consultation can ascertain when another library may be better suited for your research needs.

Thirdly, Stevenson Library offers an easily accessible collection of materials housed in one building. The library also houses photocopiers, microfiche/film readers and other equipment for student use. A computer lab is conveniently located on the ground floor of the library.

The above points represent merely a fraction of the reasons why Stevenson Library is best suited to serve as the library of first, not last resort, for the LHU community. The library's faculty and staff are dedicated to serving you. We encourage you to stop by and find out how we can help with your research needs. You will be pleasantly surprised!



"We encourage you to stop by and find out how we can help with your research needs."

Clearfield Corner

Jamie Foor, Librarian at the Clearfield Campus, is busy planning for the new building and developing some core collections for the new programs to be offered next fall at Clearfield. Temporary Librarian Stephanie Kulas is spending Thursdays at Clearfield while Jamie is up on the Lock Haven Campus to attend meetings.



This newsletter will be published once a semester. At Stevenson and Clearfield Libraries we are dedicated to traditional values and contemporary services. We are YOUR link to the world of information and technology. Stop by and see us, who knows what you'll find out!

Lock Haven University of Pennsylvania is a member of the State System of Higher Education.

Library Directory

570-893-2309

Acquisitions	x2467
Archives	x2489
Cataloging	x2468
Circulation	x2309
Computer Lab	x2472
Director	x2310
Display Windows	x2467
Instruction/Tours	x2652
Interlibrary Loan	x2545
Periodicals	x2469
Processing	x2365
Reference Desk	x2372
Reserve Desk	x2311
Student Empl..	x2365
TLC Room	x2868

Public Relations Team:

Bernadette Heiney
Stephanie Kulas
Rick Lilla
Cheryl Reynolds
Elsa Schwartz
Jessica Wilhoite

Department Liaison Listing

Each librarian serves as a resource person and communication link with a group of academic departments. Where possible, we pair subject librarians with disciplines in which they have a background.

Caryn Carr
(ccarr@lhup.edu)

Health & Physical Education
Health Sciences
Master of Education
Recreation

Shirley Chang
(schang@lhup.edu)

Accounting
Computer Science
Foreign Languages
International Studies
Management Science

Brenda Corman
(bcorman@lhup.edu)

Chemistry
Economics
Geology
History
Management
Physician Assistant Program
Physics
Political Science
Psychology

Jamie Foor
(jfoor@lhup.edu)

Clearfield Campus Library
Nursing

Rick Lilla
(rlilla@lhup.edu)

Academic Development & Counseling
Early Childhood Education
Elementary & Secondary Education
Special Education

Elsa Schwartz
(eschwart@lhup.edu)

Art
Disabilities Office
English
Master of Liberal Arts
Music

Marsha Tate
(mtate@lhup.edu)

Anthropology
Geography
Journalism
Mass Communications
Philosophy
Social Work
Sociology
Speech
Theatre