

# LOCK HAVEN UNIVERSITY

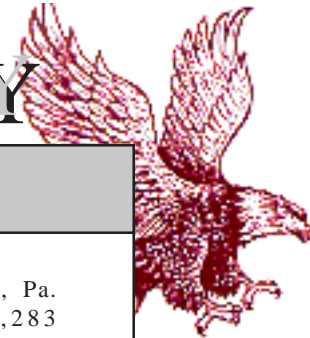
2006-2007

## LADY EAGLE VOLLEYBALL



### *Media Guide*





## Volleyball Quick Facts

### University Information

Location ..... Lock Haven, Pa.  
 Enrollment ..... 5,283  
 Founded ..... 1870  
 Nickname ..... Lady Eagles  
 School Colors ..... Crimson & White  
 Affiliation ..... NCAA Division II  
 Conference ..... Pennsylvania State Athletic  
 Home Court (Capacity) ..... Thomas Fieldhouse (2,500)  
 President ..... Dr. Keith T. Miller  
 Alma Mater ..... University of Arizona  
 Director of Athletics ..... Sharon E. Taylor  
 Associate Athletic Director ..... Peter Campbell  
 Assistant Athletic Director ..... Danielle Barney  
 Athletic Department Phone ..... (570) 893-2102  
 Trainer ..... Frank Zaffino  
 Trainer Phone ..... (570) 893-2098  
 Equipment Managers ..... Kim Lindsey, Ralph Kalbach



### LHU Volleyball History

First Year of Volleyball ..... 1991  
 All-Time Record ..... 339-192 (.638) - 15 years  
 Years in Post-Season Play ..... 10  
 All-Time NCAA Playoff Record ..... 15-9 (.625)  
 Most Recent NCAA Playoff Appearance  
     2005 NCAA Division II Atlantic Region champion / Elight  
     Eight participant

### Bald Eagle Volleyball Coaching Staff

Head Coach ..... Tom Justice  
 Alma Mater ..... Southern Illinois University ('71)  
 Record at LHU/Years ..... 339-192 (15 years)  
 Career Record/Years ..... same  
 Office Phone ..... (570) 893-2388  
 E-Mail ..... tjustice@lhup.edu  
 Best Time to Reach Coach ..... mornings  
 Assistant Coach ..... Gen Kawakita  
 Office Phone ..... (570) 893-2683  
 E-Mail ..... gkawakit@lhup.edu



### Office of Sports Information

Sports Information Director ..... Al Weston  
 Volleyball Contact ..... Austin McCusker  
 Phone ..... (570) 484-2350  
 Cell Phone ..... (717) 476-6552  
 Fax ..... (570) 484-2326  
 E-Mail ..... amccuske@lhup.edu  
 Mailing Address ..... 2 Russell Hall, Lock Haven, PA 17745  
 LHU Athletics Website ..... HavenSports.com

### Team Information

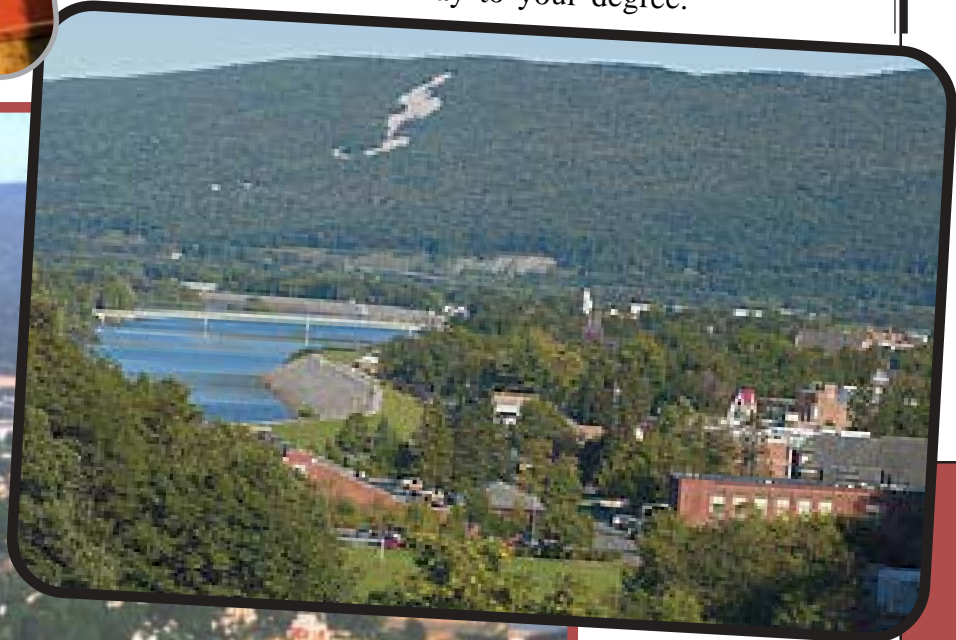
Overall Record in 2005 ..... 33-6  
 Conference Record/Place ..... 10-0/1st in PSAC West  
 Starters Returning/Lost ..... 4 / 3  
 Letterwinners Returning/Lost ..... 5/7



*Around the Campus...*

**“The Haven”**

The Lock Haven University Campus is located in the small city of Lock Haven, in beautiful central Pennsylvania, about 30 miles from Williamsport and State College. Tucked between mountain ranges it sits along side of the calm flowing Susquehanna river. It’s the perfect setting to focus on your studies ... and have a lot of fun on the way to your degree.



Feel right at home amongst a comfortable enrollment of just over 4,500 students, and a student to faculty ratio of 20:1.

Founded in 1870, we offer over 75 undergraduate programs and three graduate.



We are home to eight Division II women’s and seven Division II men’s athletic programs as well as the Division I field hockey and wrestling programs.





## STAFF

*Dr. Keith T. Miller,  
University President*



Now beginning his third year as President, Dr. Keith T. Miller began his academic career in 1987 at Fairleigh Dickinson University's Teaneck Campus as an assistant professor in the management and marketing department and as director of the campus' MBA program. In 1991, his last year there, he also served as interim chair of the management and marketing department.

Dr. Miller moved to Quinnipiac College in Hamden, Conn., in 1991, where he spent three years as associate dean of the school of business.

He later became the dean of the college of business at Niagara University, a position he held from 1994 to 2001. During his tenure there, the university was granted accreditation by the Association to Advance Collegiate Schools of Business (AACSB) and enrollment in the business college increased by 20 percent.

Dr. Miller was named provost and vice chancellor of the University of Wisconsin, Oshkosh, in 2001. While serving as chief academic officer there, Dr. Miller restructured the Academic Affairs Division to focus on faculty support, learning outcomes and curricular innovation, and helped to expand the opportunities available to students to participate in research activities with university faculty. Under Dr. Miller's leadership, the University of Wisconsin, Oshkosh developed and expanded its online programming in business, nursing and social work; secured more than 200 external grants; entered into a number of articulation agreements with nearby technical colleges; and finalized five new international collaborative agreements.

Dr. Miller has won numerous honors, including both teacher and researcher of the year awards at Niagara University. He has published more than two dozen articles on a variety of business-related topics, has served on the editorial boards of several professional journals and has made numerous presentations to community, civic and professional organizations.

He served for two years on the Board of Directors of the American Assembly of Collegiate Schools of Business International and for four years on the executive board of the Middle Atlantic Association of Colleges of Business Administration. He also has participated in a number of community activities and served on various boards, including the Learning for Life Youth Program in Oshkosh and the Oshkosh Chamber Development Corporation Board of Advisors. He has been involved with both the Boy Scouts and Girl Scouts, as well as the Big Brothers Association, YMCA and United Way.

Dr. Miller earned his Bachelor's, Master's and Doctoral degrees from the University of Arizona.

Dr. Miller and his wife, Nicolette, have two young sons.



*Sharon E. Taylor,  
Director of Athletics*



Sharon E. Taylor is serving in her 19th year as director of athletics at Lock Haven University of Pennsylvania.

She was appointed to the position in 1988 after serving as the interim director in 1987-88. Taylor is responsible for coordinating and directing LHU's 18 intercollegiate sports.

The former head women's field hockey coach at LHU, Taylor earned an impressive 333-96-27 record at the helm of the Lady Eagles from 1973-95, making her the winningest coach in Lock Haven University history. Taylor guided the Haven to six national championships (one AIAW and five NCAA), seven PSAC titles and seven additional national championship or semi-final appearances. In 1995, in her final season as head coach, Taylor led the Lady Eagles to a perfect 21-0 record and her final PSAC and NCAA Division II crowns. In addition, her 1979 lacrosse team won the first Division II national championship sponsored by the United States Women's Lacrosse Association.

Organizationally, Taylor assumed the presidency of the United States Field Hockey Association in January, 2001. She is the former president of the National Association of Collegiate Women Athletic Administrators, has served in the past as president of the Eastern College Athletic Conference, the Eastern Association of Intercollegiate Athletics for Women, and as vice president for Division III of the Association for Intercollegiate Athletics for Women. She continues to serve on numerous committees in the NCAA and U.S. Olympic Committee.

Among Taylor's many contributions to the field of athletics, she is responsible for having conceived and initiated the idea for a collegiate championship in field hockey. Working first within the USFHA and later in conjunction with the AIAW, she guided the origination and development of the championship, which was the forerunner of today's NCAA's Championship. She was inducted into the National Field Hockey Coaches Association (NFHCA) Hall of Fame in January of 2004.

Taylor is a graduate of Lock Haven State College and earned her Master's degree at the University of North Carolina at Greensboro. She is an assistant professor in the College of Education and Human Services.



**Peter Campbell**  
Associate Director  
of Athletics



**Danielle Barney**  
Assistant Director  
of Athletics



**Michael Porter**  
Head Athletics  
Trainer



**Ralph Kalbach**  
Equipment  
Manager



**Kim Lindsey**  
Equipment Manger



**Al Weston**  
Sports Information  
Director

# LOCK HAVEN UNIVERSITY



## 2006 VOLLEYBALL SCHEDULE

Aug. 25-27	Tampa U. Tournament	
Aug. 25	v. Regis	6 a.m.
Aug. 26	v. #3 Tampa	4 a.m.
Aug. 27	v. Northern Kentucky	8 p.m.
Sept. 1-2	University of Findlay Tournament	
Sept. 1	v. West Virginia State	1 p.m.
Sept. 1	v. Findlay	7:30 p.m.
Sept. 2	v. Bellarmine	Noon
Sept. 2	v. Hillsdale College	2 p.m.
<b>Sept. 12</b>	<b>SLIPPERY ROCK*</b>	<b>7 p.m.</b>
<b>Sept. 16</b>	<b>EDINBORO*</b>	<b>3 p.m.</b>
Sept. 19	at Clarion*	7 p.m.
<b>Sept. 22</b>	<b>v. KUTZTOWN</b>	<b>7:15 p.m.</b>
<b>Sept. 23</b>	<b>v. MILLERSVILLE</b>	<b>1 p.m.</b>
<b>Sept. 23</b>	<b>v. CHEYNEY</b>	<b>4 p.m.</b>
<b>Sept. 23</b>	<b>v. #25 DOWLING COLLEGE</b>	<b>5:30 p.m.</b>
Sept. 26	at California (Pa.)*	7 p.m.
Sept. 29-30	Shippensburg Tournament	
<b>Oct. 3</b>	<b>IUP*</b>	<b>7 p.m.</b>
Oct. 6-7	at Clarion University Tournament	
Oct. 6	v. Weber Int.	5 p.m.
Oct. 7	v. East Stroudsburg	9 a.m.
Oct. 7	v. Davis & Elkins	1 p.m.
Oct. 10	at Slippery Rock*	7 p.m.
Oct. 13	v. East Stroudsburg	5 p.m.
Oct. 14	v. Shippensburg	1 p.m.
Oct. 14	v. West Chester	4 p.m.
Oct. 17	at Edinboro*	7 p.m.
<b>Oct. 21</b>	<b>CLARION*</b>	<b>4 p.m.</b>
<b>Oct. 24</b>	<b>CALIFORNIA (Pa.)*</b>	<b>7 p.m.</b>
Oct. 28	at IUP*	6 p.m.
Nov. 3-4	PSAC Tournament	
Nov. 9-11	NCAA Regional Tournament	
Nov. 24-25	NCAA Elite 8 - Pensacola, Fl.	

## 2006 AVCA Preseason Poll (Top 25)

	School	2005 Record
1.	Grand Valley State	32-6
2.	Tampa	29-4
3.	Truman	32-6
4.	Concordia-St. Paul	30-5
5.	Minnesota Deluth	27-5
6.	Cal State L.A.	28-3
7.	Washburn	35-3
8.	Nebraska-Kearney	38-2
9.	North Alabama	36-2
10.	Central Missouri State	26-10
11.	Florida Southern	33-4
12.	Cal State San Bernardino	21-8
13.	Hawai'i Pacific	24-3
14.	Cal Poly Pomona	24-3
<b>15.</b>	<b>Lock Haven</b>	<b>33-6</b>
16.	Florida Gulf Coast	27-4
17.	Central Washington	23-5
18.	Seattle Pacific	22-6
19.	UC San Diego	19-8
20.	Abeline Christian	31-4
21.	BYU-Hawai'i	20-5
22.	Cal State Bakersfield	20-9
23.	Rockhurst	29-7
24.	Nebraska-Omaha	20-8
25.	Dowling	33-9

\*PSAC West Contest

**BOLD CAPS** indicate home contest (Thomas Fieldhouse)

## 2006 Lady Eagle Roster

No.	Name	Pos.	Cl.	Ht	Hometown/Previous School
1	Mayumi Ishihara	L/DS	Sr.	5-6	Hamamatsu, Japan/Coffeerville CC
2	Christina Laury	OH	Fr.	5-9	Horsham, Pa./Hatboro-Horsham
3	Maggie Borden	OH	Sr.	5-8	Hanover, Pa./Delone Catholic
4	Caroline Acosta	S	Fr.	5-6	Los Altos, Ca./Los Altos
5	Kim Windstein	MB	Fr.	6-1	McMurray, Pa./Peters Township
6	Christie Naumann	OH	Fr.	5-8	Charters Towers, Australia/Gladstone
7	Stacey Borgia	MH	So.	6-0	Factoryville, Pa./Lackawanna Trail
8	Heidi Stine	L/DS	Fr.	5-7	Hershey, Pa./Lower Dauphin
9	Inga Kurgonaite	Opp.	Jr.	6-4	Kaunas, Lithuania/Yuozas, Urbsys
10	Julie Stocklos	D/L	So.	5-2	Holland, Pa./Council Rock South
11	Larissa Goldoni	S	Sr.	6-0	Porto Alegre, Brazil/PUCRS
12	Suzanne Carrieri	MH	Fr.	5-10	Warrington, Pa./Central Bucks
13	Elizabeth Metzmaier	OH	Fr.	6-0	McMurray, Pa./Peters Township
14	Li YiZhi	MH	Sr.	5-11	Shanghai, China
15	Fabiana Gomez	S	Fr.	5-11	Montevideo, Uruguay/Consejo de E.S.
16	Gabrielle Koury	L/DS	So.	5-8	Pittsburgh/Upper St. Clair



## 2006 Season Outlook

### Volleyball Prepared to Dominate Once Again

As a dominant force on the east coast and a major powerhouse in the Pennsylvania State Athletic Conference (PSAC) year in and year out, the Lady Eagle volleyball program continues its success. Coming off of probably the best season in its rich history, Lock Haven tallied 33 wins, a school record, and only six losses. They are reigning PSAC West champions and Atlantic Region champions for the third straight year and are looking to make it four.

The looming factor in this season is the loss of seven seniors from last year's squad who were a big part of so much success in the past few seasons. To counter that, head coach **Tom Justice** is bringing in 10 new faces to the program this year, eight of which are true freshmen. "We are going to have freshmen in some key leadership positions," said Justice of his rookies, and he loves the "team first" attitude and unselfish demeanor he has witnessed so far from his new players.

"The key to this year's team will be how quickly our young people can learn our system and how adaptable they are," Justice added. "Also, our ability to get to know each other and to develop really strong relationships and bond as a team is absolutely critical." Justice thinks that if these players can gel together quickly, that Haven fans may be looking at another championship season, as he even spoke of hunger for a national title.

### Middle Hitters

This position will no doubt be the best, strongest, and most experienced area on the court for the Lady Eagles this season. The program welcomes back the return

of first team All-American, **Li YiZhi (Shanghai, China)**, who will be in her final season at Lock Haven.

"I could easily make a case that she is the best player in the entire United States right now, and that includes Division I," said Justice of his senior, and simply put, "She can do everything."

Li is very quick, and can pass, dig, serve, block, and hit extremely well which makes her the best all around player in the country and easily the most heralded player in school history.

**Stacey Borgia** enters her sophomore season after a freshmen year where she saw a large amount of playing time. She has learned a lot from playing with Li as she improved tremendously throughout her first year and should come into her own as a sophomore.



Incoming freshmen **Kim Windstein** will add height at 6-foot-1 and intensity to the position as classmate **Suzanne Carrieri** brings a hard work ethic with a 'big heart' to the program.

### Setters

The Lady Eagles will continue to run the two-setter offense and Justice has expressed confidence in three tremendous prospects to replace the two seniors that have graduated from last year's squad. Justice said, "I feel really, really confident that we can be stronger in this position, as good if not better."

# LOCK HAVEN UNIVERSITY



Incoming freshman **Fabiana Gomez** joined the LHU program in the spring and worked on her setting technique. Described by coach Justice as a “fearless hitter” and an “outstanding human being”, Gomez also can provide versatility as she can be exceptional at the outside hitter spot as well. Fellow classmate **Caroline Acosta** has a great deal of confidence and brings a sense of urgency to the team as well as knowing how to bring a team together emotionally.

Also, joining this year’s new group of setters is **Larissa Goldoni** who will have senior eligibility. She is tall for a setter, standing at 6-foot-0 and can potentially be a blocking setter if needed. She developed back row skills in the spring and is another team first oriented athlete.

## Outside Hitters

Returning for the Lady Eagles at outside hitter is senior **Maggie Borden** who should have a tremendous senior season. Borden is very versatile and has great athleticism. She understands the system and plays with a high level of energy and intensity as she is also very quick and explosive.

At 6-foot-0 freshman **Elizabeth Metzmaier** is the tallest outside hitter coach Justice has ever recruited, and is an exceptional athlete. **Christie Naumann** is a freshman who has played at the highest levels in Australian volleyball and she knows what it is like to play in a national championship. To round out the trio of freshmen outside hitters is **Christina Laury**.

Laury is quite new to the game of volleyball but coach Justice loves her approach and is very impressed with her athletic ability.

## Opposites

A 2005 American Volleyball Coaches

Association (AVCA) Honorable Mention All-American and all-conference player, **Inga Kurgonaite** enters her junior season as the tallest player for LHU standing at 6-foot-4. She has tremendous natural attributes and can put some smoke on the ball when she hits it. Kurgonaite is emerging as more of a complete volleyball player and should see more opportunities this season for making things happen on the court.

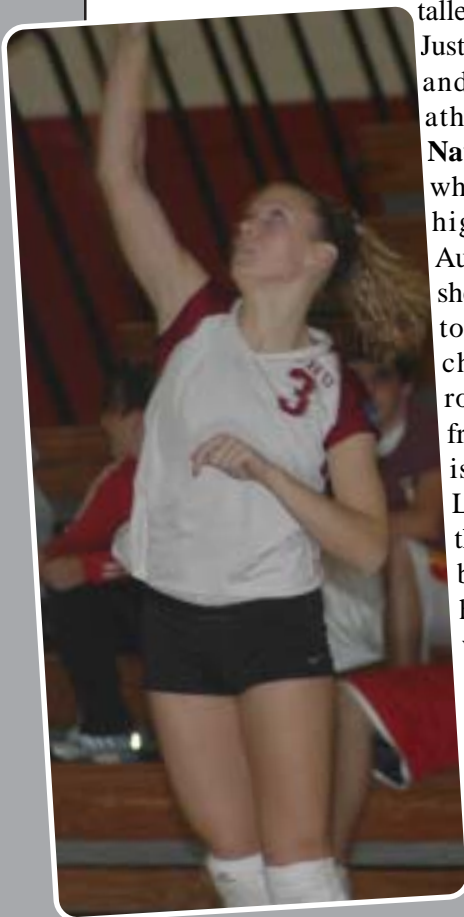
## Libero/Defensive Specialist

**Mayumi Ishihara** is a senior and will look to maintain her libero spot after blossoming last season in November after working with the Lock Haven program for a few months. She could possibly see time at the setter position as well. Returning sophomore **Julie Stocklos** had a difficult time adjusting last season but then made great progress as a freshman and just needs game-type experience to fully blossom.

Freshmen **Heidi Stein** is a talented athlete who will improve quickly under the Lock Haven system. She could see significant playing time by the end of the season. Sophomore **Gabrielle Koury** is a transfer from a Division I school and is an exceptional server and passer. She also is a team player who has great character and work ethic.

Justice believes that overall the team has the potential to be better at every position this year even though they are a young squad. He thinks that if they can come together they will be able to beat just about anyone even though there are a lot of freshmen on the team. The top spot in the country is still the goal.

The Lady Eagles open up their season Friday, Aug. 25 at the Tampa University Tournament vs. Regis University and play their first home match on Tuesday, Sept. 12 against Slippery Rock University.



## Head Coach:



**TOM JUSTICE**

Alma Mater ..... Southern Illinois University '71  
 Career Record ..... 339-192 (.638)  
 Record at LHU ..... same  
 Years Coaching ..... 16  
 E-mail ..... tjustice@lhup.edu  
 Phone ..... 570-893-2388

Tom Justice is Lock Haven University volleyball. Justice launched the volleyball program at LHU 16 seasons ago, and has built it into a dominant team in the Pennsylvania State Athletic Conference (PSAC) and a perennial noise-maker at the national level. He was recently inducted into the Pennsylvania Volleyball Coaches Association Hall of Fame in February 2006.

Justice directed the 2005 squad to a 33-6 record, the best season in LHU volleyball history. The squad finished first in the PSAC West with a 10-0 record and won the NCAA East Regional Championship for the third straight year.

Since helping start the program 16 seasons ago, Justice has guided Lock Haven volleyball past the prestigious 300-win mark, with an impressive 339-192 record. The program's success has been particularly evident over the past three years, as Justice has directed the Lady Eagles to a 92-16 mark and a record of 26-4 in the PSAC Western Division.

After struggling in the early years, the Lady Eagles hit their stride as a program in 1995 when they won their first PSAC Championship. Since then they finished first in the PSAC regular season rankings

in all but two years, and they have qualified for the NCAA playoffs every year except 2002.

The Haven volleyball team won PSAC championship tournament titles in 1996, 1999, 2000, 2003 and 2004 and won NCAA Atlantic Region championships in 1997, 1999, 2001, 2003, 2004 and 2005, advancing to the NCAA Division II Elite Eight on each of those occasions. Coach Justice has been named the PSAC Western Division Coach of the Year on three occasions, and has also merited two Atlantic Region Coach of the Year honors.

As Justice has overseen the progress of the program from a club team to a national contender, he has guided 37 players to multiple All-PSAC West honors while another 21 have earned All-Atlantic Region accolades. In 2005, he produced two All-Americans in **Li Yizhi** (AVCA First Team) and **Inga Kurgonaitė** (AVCA Honorable Mention) after guiding the team to the Elite Eight.

A native of Denver, Justice attended Colorado State University for two years before transferring to the University of Colorado in 1966 where he finished up his wrestling career in the Big 8. From there he moved to Southern Illinois University where he served as an assistant coach for four years, earning his bachelor's degree in 1971 before obtaining his master's degree in 1972. He worked in the high school wrestling coaching ranks for several years, and was an assistant on four U.S. Junior World wrestling teams including three who won World Championships. He arrived at Lock Haven in 1985 as an assistant coach with the Bald Eagle wrestling program, then changed gears and took over the head coaching reigns of the swimming and volleyball programs from 1991 through 1998, when he gave up the swimming to concentrate solely on volleyball. He has decades of coaching experience in wrestling, swimming and volleyball under his belt, and is also an NSCA and US Weightlifting certified strength coach, which has been a significant advantage in developing the strength and vertical leap ability of his teams.

He is married to the former Peggy Mitchell of Mt. Zion, Ill., also an SIU graduate. The Justices have three children, Stephanie (31), Kimberly (29) and Thomas, Jr. (27). Stephanie is a graduate of Colorado State and both Kim and Thomas are Lock Haven graduates.



## Assistant Coach:

### GEN KAWAKITA

Juntendo University  
Sixth Season



**Gen Kawakita** enters his sixth season as the assistant coach for the Lady Eagle volleyball program.

Kawakita, a native of Tokyo, Japan, brings an impressive resume of coaching experience to Lock Haven. He previously served as the assistant men's volleyball coach at Juntendo University from 1998 to 2001. There, he assisted in team preparation and recruiting, and helped lead the squad to two league championships in 1999 and 2000.

Kawakita also has taken on duties as an assistant for the U.S. Women's National Team during the past five summers (2001, 02, 03, 04, 05). He also continues to travel the country as a guest clinician at camps and clinics.

A graduate of Juntendo University with a bachelor's degree in health and sports science and a master's degree in coaching science, Kawakita was a key member of Juntendo's volleyball team from 1996-98.

Kawakita's outstanding coaching and playing experience will continue to prove to be a tremendous benefit to the Lady Eagle volleyball team.



## STARTERS RETURNING (R) AND LOST (L)

- (R) ..... **Stacey Borgia** (So., MH, 170 k, .227 pct., 142 tb)  
..... *Atlantic Region All-Tournament Team*
- (R) ..... **Inga Kurgonaite** (Jr., OPP, 400 k, .321 pct., 106 tb)  
..... *Second Team All-Atlantic*  
..... *AVCA All-American Honorable Mention*  
..... *Daktronics All-Atlantic Region Second Team*  
..... *Atlantic Region All-Tournament Team*  
..... *All-PSAC West Second Team*
- (R) ..... **Li YiZhi** (Sr., MH, 497 k, .431 pct., 536 digs, 188 tb)  
..... *AVCA First Team All-American*  
..... *AVCA First Team All-Atlantic Region*  
..... *AVCA Atlantic Region Athlete of the Year*  
..... *Elite Eight All-Tournament Team*  
..... *Daktronics All-Atlantic Region First Team*  
..... *Atlantic Region All-Tournament Team*  
..... *Daktronics Atlantic Region Athlete of the Year*  
..... *PSAC West Athlete of the Year*  
..... *All-PSAC West First Team*
- (R) ..... **Mayumi Ishihara** (Sr., S/DS, 37 SA, 217 digs)
- (R) ..... **Maggie Borden** (Sr., OH, 206 K, .221 pct., 26 SA)
- (R) ..... *Julie Stocklos* (So., DS/L)
- (L) ..... **Michelle Deehan** (OH, 224 k, .154 pct., 272 digs)
- (L) ..... **Allison Furry** (S, 903 a, 47 SA, 185 digs)  
..... *All-PSAC West Second Team*
- (L) ..... **Allison Wade** (OH, 309 k, .222 pct., 56 SA, 330 digs)  
..... *Daktronics All-Atlantic Region Second Team*  
..... *All-PSAC West Second Team*

## Championship History

### PSAC West Regular Season Champions

2005, 2004, 2003\*, 2001, 2000\*, 1999,  
1998, 1996\*, 1995\*

### PSAC Tournament Champions

2004, 2003, 2000, 1999, 1996

### NCAA Division II Atlantic Region Qualifier

2005, 2004, 2003, 2001, 2000, 1999, 1998,  
1997, 1996

### NCAA Division II Atlantic Region Champion/Elite

### Eight Participant

2005, 2004, 2003, 2001, 1999, 1997

## 2006 INCOMING PLAYERS

Player	Class	Pos.	Ht.
Caroline Acosta	Fr.	S	5'6"
Suzanne Carrieri	Fr.	MH	5'10"
Fabiana Gomez	Fr.	S	5'11"
Larissa Goldoni	Sr.	S	6'0"
Gabrielle Koury	So.	LDS	5'8"
Christina Laury	Fr.	OH	5'9"
Elizabeth Metzmaier	Fr.	OH	6'0"
Christie Naumann	Fr.	OH	5'8"
Heidi Stine	Fr.	LDS	5'7"
Kim Windstein	Fr.	MB	6'1"



# THE PLAYERS

*Mayumi Ishihara*

#1



**Yr.-Sr., Pos.-Setter/Def.Specialist, Ht.-5-6, Hometown/Previous School- Hamamatsu, Japan/CoffeevilleCC**

**2005:** Played in 116 games ... fifth on the team with 217 digs and accounted for 37 service aces, which was also good enough for fifth on the team ... hit a career high 10 service aces vs. St. Anselm College. **Prior to Lock Haven:** Played for two years at Coffeeville Community College in Coffeeville, Kan. as the team's setter ... Named second-team Kansas Junior Community College Conference in 2004 ... KJCCC honorable mention nod in 2003. **In High School:** Attended Seirei Christopher High School in Hamamatsu, Japan. **Personal:** Daughter of Shigeki and Toshiko Ishihara ... Athletic training major.



**INDIVIDUAL STATISTICS**

Year	GP	MP	K	A	SA	SE	RE	Digs
2005	116	36	1	6	37	59	29	217
<b>Totals</b>	<b>116</b>	<b>36</b>	<b>1</b>	<b>6</b>	<b>37</b>	<b>59</b>	<b>29</b>	<b>217</b>

*Christina Laury*

#2



**Yr.- Fr., Pos.- OH, Ht.- 5-9, Hometown/Previous School- Horsham, Pa./Hatboro-Horsham**

**In High School:** Was coached by Jeff Wisner ... 2004 & 2005 Suburban One league first-team for volleyball ... 2004 & 2005 volleyball co-captain ... 2003 Suburban One first-team outfielder for softball ... 2004 and 2005 Suburban One second-team 3<sup>rd</sup> base in softball. **Personal:** Daughter of Frank and Kim O'Neil ... Has one sister, Mallory and one brother, Ben ... Undecided in a major.

*Maggie Borden*

#3



**Yr.- Sr., Pos.- OH, Ht.- 5-8, Hometown/Previous School- Hanover, Pa./Delone Catholic**

**Put it on the Borden:** Talented athlete who provided depth outside ... Will compete for starting outside hitter slot ... **2005:** Played in 126 games ... Acquired a .221 attack percentage ... Added 206 kills to her career total ... Tallied 33 assists, 26 service aces, 123 digs, and 70 total blocks ... Smacked a season high 14 kills against California (Pa.) **2004:** Played in 65 games ... Notched 79 kills, good for

seventh on the team ... Posted 69 digs and 32 blocked shots ... Registered a season high 13 kills against East Stroudsburg ... All-PSAC in both Indoor and Outdoor Track and Field ... PSAC Scholar-Athlete. **2003:** Played in 38 games ... Registered 100 kills and an attack percentage of .217 ... Collected 74 digs and 18 blocks ... Posted career-high 14 kills twice, coming against West Chester University and Indiana University (Pa.) ... Recorded a career-best 15 digs in same match versus West Chester ... PSAC Outdoor 400 meter champion ... PSAC Outdoor Track and Field Rookie of the Year ... PSAC Scholar-Athlete. **In High School:** Two-time all-state hitter ... 2002 Pennsylvania Volleyball Coaches Association All-District Class AA Second Team ... Two-time YAI AA Division II All-Star ... Also a three-time PIAA AA champion in the 400-meter dash and the Track Athlete of the Year ... Two-time Daily Record Player of the Year in track and field ... Played club volleyball for York Juniors ... Student council member. **Personal:** Daughter of Dave and Tina Borden ... Elementary Education major ... Dean's List student in Spring '04 semester.

**INDIVIDUAL STATISTICS**

Year	GP	MP	K	A	SA	SE	RE	Digs	TB
2003	38	16	100	.217	3	10	74	18	
2004	65	25	79	.145	12	11	69	32	
2005	126	38	206	.221	33	26	123	70	
<b>Total</b>	<b>229</b>	<b>79</b>	<b>385</b>	<b>.201</b>	<b>48</b>	<b>47</b>	<b>266</b>	<b>120</b>	





## ***THE PLAYERS***

*Caroline Acosta*

**#4**



**Yr.- Fr., Pos.- S, Ht.- 5-6,  
Hometown/Previous School- Los  
Altos, Ca./Los Altos**

**In High School:** Was coached by Robyn Lewis and Dave Winn ... Scholar athlete ... President's award for educational excellence ... All-league in volleyball in 2005, 2003, and 2002 ... Volleyball captain in 2006, 2005, and 2004 ... Bronze medal in Junior Olympic Invitational. **Personal:** Daughter of Craig and Grace Acosta ... Has one brother, Mark ... Majoring in athletic training.

*Kim Windstein*

**#5**



**Yr.- Fr., Pos.- MH, Ht.- 6-1,  
Hometown/Previous School-  
McMurray, Pa./Peters Township**

**In High School:** Was coached by Henry Mulholland ... Three year academic letterer ... Honor roll student ... President's academic award ... First team all-section in volleyball ... Second-team all WPIAL ... WPIAL all-star game participant. **Personal:** Daughter of Mark and Terri Windstein ... Has one brother, John ... Undecided on a major.

*Christie Naumann*

**#6**



**Yr.- Fr., Pos.- OH, Ht.- 5-8,  
Hometown/Previous School-  
Charters Towers, Australia/  
Gladstone**

**In High School:** Was coached by Brian Van der Weide ... Captain of Australian school girls team ... State MVP in 2004 ... Sports woman of the year in 2004. **Personal:** Daughter of Ken and Marj Naumann ... Has a brother David and a sister Alana.

*Stacey Borgia*

**#7**



**Yr.- So., Pos.- MH, Ht.- 6-0,  
Hometown/Previous School-  
Factoryville, Pa./Lackawanna Trail**

**Beginning with Borgia:** 2005: Played an important role as a true freshman ... Played in 128 games ... Was second on the team in blocks with 142 ... recorded 170 kills with an attack percentage of .227 ... Atlantic Region All-Tournament Team. **In High School:** Named League and Region MVP honors in 2004 ... Was named first-team all- league and all-region in 2003 and 2004 ... Captained the Lions during her junior and senior seasons ... National Honor Society member. **Personal:** Daughter of Anthony and Lorraine Borgia ... Undecided on a major.



**INDIVIDUAL STATISTICS**

Year	GP	MP	K	Pct.	A	SA	Digs	TB
2005	128	38	170	.227	10	0	66	142
<b>Total</b>	<b>128</b>	<b>38</b>	<b>170</b>	<b>.227</b>	<b>10</b>	<b>0</b>	<b>66</b>	<b>142</b>

*Heidi Stine*

**#8**



**Yr.- Fr., Pos.- L, Ht.- 5-6,  
Hometown/Previous School-  
Hershey, Pa./Lower Dauphin**

**In High School:** Was coached by Loretta Ranck ... Second team all-district team ... Mid-Penn first and second team member. **Personal:** Daughter of Walter and Cheryl Stine ... Has one sister, Erin and one brother, Josh ... Majoring in Health and Physical Education.



# THE PLAYERS

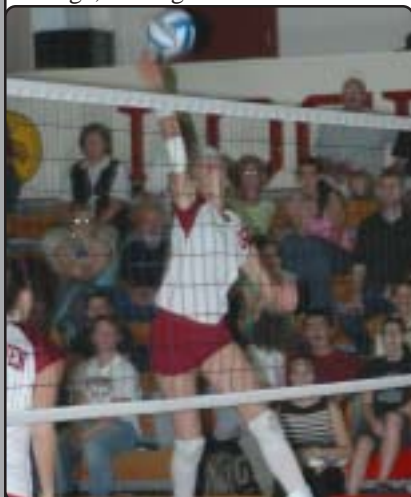
*Inga Kurgonaite*

#9



**Yr.- Jr., Pos.- Opposite, Ht.- 6-4, Hometown/Previous School- Kaunas, Lithuania/Yuozas Urbsys**

**Keeping with Kurgonaite:** Made an immediate impact as a freshman for the Lady Eagle attack ... Will look to secure one of the starting spots at outside hitter. **2005:** AVCA All-Atlantic Region Second Team ... AVCA All-American Honorable Mention ... Daktronics All-Atlantic Region Second Team ... Atlantic Region All-Tournament Team ... All-PSAC West Second Team ... Posted an attack percentage of .321 along with 400 kills good for second on the team ... Tallied 89 digs and 106 total blocks. **2004:** PSAC West Rookie of the Year ... Second Team All-PSAC West ... AVCA Atlantic Region Freshman of the Year ... AVCA All-Atlantic Region First Team ... Played in 92 games ... Pounded out 258 kills, good for second on the team ... Recorded 107 blocked shots at a 1.16 average, leading all PSAC rookies and



ranking third on the team ... Added 82 digs and 15 service aces ... Registered a career-high 10 blocks against Clarion ... Had a season-high 17 kills versus Indiana University (Pa.) **Prior to Lock Haven:** Youth National Selection member. **Personal:** Daughter of Vilijus Kurgonas and Dana Zailskiene ... Majoring in Recreation Management.

**INDIVIDUAL STATISTICS**

Year	GP	MP	K	Pct.	A	SA	Digs	TB
2004	92	30	258	.262	26	15	82	107
2005	126	36	400	.321	27	12	89	106
<b>Total</b>	<b>218</b>	<b>66</b>	<b>658</b>	<b>.296</b>	<b>53</b>	<b>27</b>	<b>171</b>	<b>213</b>

*Julie Stocklos*

#10



**Yr.- So., Pos.- D/L, Ht.- 5-2, Hometown/Previous School- Holland, Pa./Council Rock South**

**Yes, we have that in Stocklos:** 2005: Played in 11 games ... Tallied 6 digs. **In High School:** Earned 2004 SOL First Team ... Named to SOL Honorable Mention Team in 2003 ... Was a 2-year captain for the Hawks. **Personal:** Daughter of Sonia and Dale Morges ... Health and physical education major.

**INDIVIDUAL STATISTICS**

Year	GP	MP	K	Pct.	A	SA	Digs	TB
2005	11	11	0	0	0	0	6	0
<b>Total</b>	<b>11</b>	<b>11</b>	<b>0</b>	<b>0</b>	<b>0</b>	<b>0</b>	<b>6</b>	<b>0</b>

*Larissa Goldoni*

#11



**Yr.- Sr., Pos.- S, Ht.- 6-0, Hometown/Previous School- Porto Alegre, Australia/PUCRS**

**Personal:** Daughter of Augusto and Elisabeth Machado Goldoni ... Has two sisters, Vanessa and Juliana ... Majoring in Liberal Arts.

*Suzanne Carrierri*

#12



**Yr.- Fr., Pos.- MH, Ht.- 5-10, Hometown/Previous School- Warrington, Pa./Central Bucks**

**In High School:** Was coached in Frank Woodring ... All-intell team senior year in volleyball. **Personal:** Daughter of Brian and Susan Carrierri ... Has one sister, Michele ... Majoring in Elementary Education.

*Elizabeth Metzmaier*

#13



**Yr.- Fr., Pos.- OH, Ht.- 6-0, Hometown/Previous School- McMurray, Pa./Peters Township**

**In High School:** Was coached by Henry Muholland ... Offensive MVP for volleyball in 2004 and 2005 ... Volleyball captain in 2005 ... Holds school record in javelin throw with a distance of 121-feet. **Personal:** Daughter of Jim and Toni Metzmaier ... Has two brothers, Mike and Mark ... Majoring in Health and Physical Education.



## THE PLAYERS

*Li YiZhi*

#14



**Yr.- Sr., Pos.- Middle Hitter, Ht.- 5-11, Hometown/Previous School- Shanghai, China**

**Gettin' YiZhi with it:** One of the best all-around volleyball players in LHU history ... Led NCAA Division II in attack percentage for the second straight year (.461) in sophomore season ... Holds LHU career record in attack percentage (.454), and is second on the list in kills (1,458), digs (1,367), and blocks (496), as she is on pace to break those as well this upcoming season ... Holds LHU single-season records in kills (538), blocks (188), digs (536), and hitting percentage (.471) ... Holds LHU game records for kills in a three-game match (21), four-game match (25) and five-game match (35) ... **2005:** AVCA First Team All-American ... AVCA All-Atlantic Region First Team ... AVCA Atlantic Region Athlete of the Year ... Elite Eight All-Tournament Team ... Daktronics All-Atlantic Region First Team ... Atlantic Region All-Tournament Team ... Daktronics Atlantic Region Athlete of the Year ... PSAC West Athlete of the Year ... All-PSAC West First Team ... Led the team with 497 kills, a .431 attack percentage, 70 service aces, 536 digs, 48 solo blocks and 188 total blocks in 132 games ... **2004:** AVCA First Team All-American ... Daktronics First Team All-American ... AVCA All-Atlantic Region First Team ... Daktronics All-Atlantic Region First Team ... PSAC West Athlete of the Year ... First Team All-PSAC West ... NCAA Atlantic Region All-

Tournament team ... PSAC Championships MVP... Two-time PSAC West Player of the Week (11/9, 9/7) ... Led NCAA with a .461 hitting percentage ... Ranked fourth in the nation with 1.68 blocks per game ... Led team with 423 kills, 365 digs, 49 solo blocks and 172 total blocks in 104 games ... Tallied 38 service aces, good for second on the team ... Third on the team with 47 assists ... Posted 21 kills, 24 digs and nine blocks against Indiana (Pa.) ... Registered 21 kills and a career-high 11 blocks in PSAC Semifinal match ... Had an LHU season-high 23 kills against Edinboro University ... **2003:** Daktronics First Team All-Atlantic Region ... PSAC West Rookie of the Year ... First Team All-PSAC West ... NCAA Atlantic Region All-Tournament team ... PSAC Championships MVP ... On the Shepherd College Invitational and Ashland University Invitational All-Tournament teams ... Twice named PSAC West Player of the Week (9/22, 10/27) ... Led NCAA Division II with .471 attack percentage ... Led LHU with 538 kills, 466 digs, 42 service aces and 136 blocks ... Totaled a career-high 35 kills in regular season match versus Indiana (Pa.) ... Also produced career-highs of 24 digs, six service aces and 11 blocks ... Had 18 kills and 12 digs in regional championship match ...



Added 20 kills, 14 digs and seven blocks in NCAA Quarterfinal match versus eventual national champion North Alabama ... PSAC Scholar-Athlete. **Personal:** Daughter of Li Ming Zheng and Dong Shun

### INDIVIDUAL STATISTICS

Year	GP	MPK	Pct.	A	SA	Digs	TB
2003	126	36	.538	.471	56	42	466
2004	104	31	.423	.461	47	38	365
2005	132	39	.497	.431	53	70	536
<b>Total</b>	<b>362</b>	<b>106</b>	<b>1458</b>	<b>.454</b>	<b>156</b>	<b>150</b>	<b>1367</b>

*Fabiana Gomez*

#15



**Yr.- Fr., Pos.- S, Ht.- 5-11, Hometown/Previous School- Montevideo, Uruguay/Consejo de E.S.**

**Personal:** Daughter of Danilo Gomez and Lil Cassese ... Majoring in business.

*Gabrielle Koury*

#16



**Yr.- So., Pos.- S, Ht.- 5-11, Hometown/Previous School- Pittsburgh/Upper St. Clair**

**In High School:** Was coached by Jen Hughes ... National Honors Society ... Two year captain for Pittsburgh Elite Junior Olympic team. **Personal:** Daughter of Robin Koury ... Has one sister, Alex ... Majoring in Psychology.



## 2005 Individual Season Statistics

Player	GP-MP	-----ATTACK-----					-----SET-----		-----SERVE-----			SE
		K	K/Game	E	TA	Pct.	A	A/Game	SA	SA/Game		
Ishihara, Myumi	116-36	1	0.01	0	1	1.000	6	0.05	37	0.32	59	
Li, YiZhi	132-39	497	3.77	94	936	.431	53	0.40	70	0.53	39	
Kurgonaite, Inga	126-36	400	3.17	114	891	.321	27	0.21	12	0.10	18	
Hayes, Meghan	27-15	34	1.26	12	83	.265	3	0.11	5	0.19	7	
Borgia, Stacey	128-38	170	1.33	69	445	.227	10	0.08	0	0.00	2	
Wade, Allison	132-38	309	2.34	109	900	.222	24	0.18	56	0.42	34	
Borden, Maggie	126-38	206	1.63	75	593	.221	33	0.26	26	0.21	9	
Deehan, Michelle	119-39	224	1.88	109	746	.154	36	0.30	28	0.24	27	
Bebee, Kelly	49-23	17	0.35	12	59	.085	5	0.10	6	0.12	14	
Thompson, Jen	52-27	42	0.81	27	182	.082	12	0.23	5	0.10	2	
Kostelich, Kelly	134-39	2	0.01	2	7	.000	657	4.90	48	0.36	29	
Crabb, Jena	3-2	0	0.00	0	0	.000	0	0.00	0	0.00	0	
Sowers, Kirsten	14-12	0	0.00	0	0	.000	0	0.00	3	0.21	7	
Stocklos, Julie	11-11	0	0.00	0	0	.000	0	0.00	0	0.00	2	
Furry, Allison	136-39	2	0.01	3	9	-.111	903	6.64	47	0.35	42	
<b>LOCKHAVEN</b>	<b>136-39</b>	<b>1904</b>	<b>14.00</b>	<b>626</b>	<b>4852</b>	<b>.263</b>	<b>1769</b>	<b>13.01</b>	<b>343</b>	<b>2.52</b>	<b>291</b>	

Player	G	RE	-----DIG-----		-----BLOCKING-----					
			Dig	Dig/G	BS	BA	Total	B/Game	BE	BHE
Ishihara, Myumi	116	29	217	1.87	0	0	0	0.00	0	3
Li, YiZhi	132	16	536	4.06	48	140	188	1.42	16	2
Kurgonaite, Inga	126	2	89	0.71	23	83	106	0.84	25	13
Hayes, Meghan	27	0	16	0.59	5	16	21	0.78	4	0
Borgia, Stacey	128	3	66	0.52	45	97	142	1.11	18	4
Wade, Allison	132	44	340	2.50	9	38	47	0.36	13	7
Borden, Maggie	126	25	123	0.98	16	54	70	0.56	12	9
Deehan, Michelle	119	33	272	2.29	18	40	58	0.49	2	3
Bebee, Kelly	49	13	67	1.16	0	4	4	0.08	8	1
Thompson, Jen	52	0	21	0.40	5	28	33	0.63	8	1
Kostelich, Kelly	134	2	224	1.67	0	0	0	0.00	1	32
Crabb, Jena	3	0	1	0.33	0	0	0	0.00	0	0
Sowers, Kirsten	14	0	6	0.55	0	0	0	0.00	0	0
Stocklos, Julie	11	0	6	0.43	0	0	0	0.00	0	0
Furry, Allison	136	2	185	1.36	2	4	6	0.04	0	30
<b>LOCKHAVEN</b>	<b>136</b>	<b>173</b>	<b>2149</b>	<b>15.80</b>	<b>171</b>	<b>504</b>	<b>423.0</b>	<b>3.11</b>	<b>107</b>	<b>105</b>





## 2005 VOLLEYBALL RESULTS

Aug. 26	v. Northwood	W, 3-0
Aug. 26	v. Ferris State	L, 2-3
Aug. 27	v. Grand Valley State	L, 0-3
Aug. 27	v. Lake Superior State	W, 3-1
Sept. 2	v. Central Missouri State	L, 0-3
Sept. 2	v. Augustana College	W, 3-0
Sept. 3	v. Barry	W, 3-0
Sept. 3	v. Tampa	W, 1-3
Sept. 13	at IUP*	W, 3-1
Sept. 17	at Edinboro*	W, 3-0
Sept. 20	at California (Pa.)*	W, 3-1
Sept. 23	v. Shippensburg	W, 3-0
Sept. 24	v. West Chester	W, 3-0
Sept. 24	v. East Stroudsburg	W, 3-0
Sept. 27	at Slippery Rock*	W, 3-0
Sept. 30	v. Alderson	W, 3-0
Sept. 30	v. Lees-McRae	W, 3-0
Oct. 1	v. Virginia Union	W, 3-0
Oct. 1	v. Geneva	W, 3-0
<b>Oct. 4</b>	<b>CLARION*</b>	<b>W, 3-0</b>
Oct. 7	v. Millersville	W, 3-0
Oct. 8	v. Cheyney	W, 3-0
Oct. 8	v. Kutztown	W, 3-0
<b>Oct. 11</b>	<b>IUP*</b>	<b>W, 3-0</b>
Oct. 14	v. St. Anselm	W, 3-0
Oct. 14	v. Mount Olive	W, 3-0
Oct. 15	v. Mercy	W, 3-0
Oct. 15	v. Dowling	W, 3-1
<b>Oct. 21</b>	<b>EDINBORO*</b>	<b>W, 3-0</b>
<b>Oct. 25</b>	<b>CALIFORNIA (Pa.)*</b>	<b>W, 3-0</b>
<b>Oct. 28</b>	<b>NEW HAVEN</b>	<b>W, 3-0</b>
<b>Nov. 1</b>	<b>SLIPPERY ROCK*</b>	<b>W, 3-0</b>
Nov. 5	at Clarion*	W, 3-1
Nov. 11	v. Edinboro*	W, 3-0
Nov. 11	v. California*	L, 2-3
Nov. 17	v. North Carolina Central	W, 3-0
Nov. 18	v. IUP*	W, 3-2
Nov. 18	v. Lees-McRae	W, 3-1
Dec. 1	v. Cal-State L.A.	L, 2-3

## 2005 AVCA Final Poll (Top 25)

	School	2005 Record
1.	Grand Valley State	32-6
2.	Nebraska-Kearney	38-2
3.	Tampa	29-4
4.	Truman	32-6
5.	Concordia-St. Paul	30-5
6.	Cal State L.A.	28-3
7.	Minnesota Deluth	27-5
8.	Hawai'i Pacific	24-3
9.	North Alabama	36-2
10.	Washburn	35-3
11.	Central Missouri State	26-10
12.	Abeline Christian	31-4
<b>13.</b>	<b>Lock Haven</b>	<b>33-6</b>
14.	Cal State San Bernardino	21-8
15.	Cal Poly Pomona	24-3
16.	Florida Southern	33-4
17.	Central Washington	23-5
18.	Seattle Pacific	22-6
19.	Florida Gulf Coast	27-4
20.	BYU-Hawai'i	20-5
21.	Cal State Bakersfield	20-9
22.	UC San Diego	19-8
23.	Nebraska-Omaha	20-8
24.	Rockhurst	29-7
25.	Dowling	33-9

\*PSAC West Contest

**BOLD CAPS** indicate home contest (Thomas Fieldhouse)



# Lady Eagle Volleyball Records

## Individual Match Records

### Attack Attempts

3 game matches

- 56—Kristi Kauffman vs. West Chester, Oct. 12, 2003
- 49—Kristi Kauffman vs. Cal (Pa.), Nov. 14, 2003
- 45—Allison Wade vs. East Stroudsburg, Oct. 10, 2003
- 43—Michelle Deehan vs. Millersville, Oct. 11, 2003
- 43—Kara Warnke vs. Edinboro, Nov 11, 2000
- 43—Amy Snelbaker vs. Alderson-Broadus, Oct. 22, 1993
- 42—Sarah Curtis vs. East Stroudsburg, Nov. 15, 1996
- 40—Kara Warnke vs. Edinboro, Oct 17, 2000
- 37—Lauren Nuzum vs. Cal. State Domingues, Aug. 25, 2001

4 game matches

- 60—Kristi Kauffman vs. Kutztown, Nov. 14, 2003
- 56—Sarah Schall vs. Slippery Rock, Sept. 28, 1999
- 54—Kristi Kauffman vs. Lees-McRae, Nov. 21, 2003
- 54—Sarah Schall vs. California (Pa.), Oct. 6, 1998
- 53—Megan Best vs. California (Pa.), Oct. 29, 1996
- 52—Sarah Schall vs. West Texas A&M, Dec. 2, 1999
- 51—Kelly Crouch vs. Clarion, Sept. 8 2001
- 51—Kara Warnke vs. IUP, Sept 19, 2000
- 51—Kara Warnke vs. Slippery Rock, Oct 31, 2000
- 51—Allison Wade vs. Clarion, Nov 5, 2005

5 game matches

- 68—Sarah Schall vs. California (Pa.), Sept. 7, 1999
- 66—Kristi Kauffman vs. Catawba College, Oct. 5, 2002
- 61—Kristi Kauffman vs. East Stroudsburg, Sept. 28, 2002
- 59—Sarah Schall vs. Edinboro, Nov. 13, 1999
- 59—Allison Wade vs. North Alabama, Dec. 4, 2003
- 59—Sarah Curtis vs. Edinboro, Nov. 16, 1996

### Kills

3 game matches

- 21—Li Yizhi vs. Indiana (Pa.), Nov. 12, 2004**
- 20—Denise Kurtz vs. Alderson-Broadus, Oct. 22, 1993
- 19—Li YiZhi vs. Clarion, Sept. 6, 2003**
- 19—Kelli Crouch vs. IUP, Oct. 24, 2000
- 19—Sarah Curtis vs. Juniata, Oct. 25, 1997
- 18—Sarah Schall vs. Edinboro, Sept 14, 1999
- 17—Kathryn Stallings vs. Alderson-Broadus, Oct 20, 2000
- 17—Kathryn Stallings vs. East Stroudsburg, Nov 10, 2000
- 17—Kara Warnke vs. Edinboro, Nov 11, 2000
- 17—Li Yizhi vs. Lees-McRae, Nov. 19, 2004**
- 17—Li Yizhi vs. Shippensburg, Oct. 18, 2003**

4 game matches

- 25—Li Yizhi vs. IUP, Nov. 11, 2003**
- 25—Li Yizhi vs. Clarion, Sept. 19, 2003**
- 25—Lauren Nuzum vs. Clarion, Oct. 23, 2001
- 24—Jen Nurmi vs. IUP, Sept. 27, 1994
- 23—Li Yizhi vs. Edinboro, Oct. 16, 2004**

23—Kristi Kauffman vs. Millersville, Sept. 27, 2002

23—Stephanie LaFata vs. IUP, Oct. 20, 1998

**23—Inga Kurgonaite vs. LMCWVB, Nov 19, 2005**

22—Kathryn Stallings vs. Slippery Rock, Sept. 28, 1999

22—Fadime Verhoeven vs. Edinboro, Oct. 14, 1997

5 game matches

**35—Li Yizhi vs. IUP, Nov. 4, 2003**

27—Kristi Kauffman vs. Catawba College, Oct. 25, 2002

26—Denise Kurtz vs. Dowling College, Oct. 14, 1994

25—Stephanie LaFata vs. Juniata College, Oct 9, 1999

25—Jen Nurmi vs. NYIT, Sept. 10, 1993

**25—Li YiZhi vs. IUP, Nov 18, 2005**

24—Kathryn Stallings vs. Edinboro, Nov. 13, 1999

24—Amy Snelbaker vs. Slippery Rock, Oct. 6, 1995

23—Sarah Schall vs. California (Pa.), Sept. 7, 1999

23—Kathryn Stallings vs. Juniata College, Oct. 23, 1999

23—Lauren Nuzum vs. IUP, Sept. 25, 2001

### Hitting Percentage

Minimum 12 attempts

3 game matches

**.857 (12-0-14) —Li YiZhi vs. West Chester, Sept. 24, 2005**

**.846 (12-1-13) —Li YiZhi vs. St. Anselm College, Oct 14, 2005**



Current LHU All-American Li YiZhi



## *Lady Eagle Volleyball Records*

.769 (10-0-13)—Fadime Verhoeven vs. Mercy College, Sept. 8, 1995

.765 (13-0-17)—Stephanie La Fata vs. WV Wesleyan, Sept. 2, 1999

.750 (9-0-12)—Natalie Jackson vs. LIU-Southampton, Oct. 22, 1994

.737 (14-0-19)—Kathryn Stallings vs. Gallaudet, Oct. 21, 2000

.730 (12-1-15)—Fadime Verhoeven vs. Gettysburg, Oct. 25, 1997

.722 (14-1-18)—Denise Kurtz vs. Queens College, Sept. 24, 1995

4 game matches

.696 (16-0-23)—Denise Kurtz vs. High Point, Oct. 13, 1995

**.667 (18-2-24)—Li Yizhi vs. Edinboro, Nov. 22, 2003**

**.630 (19-2-27)—Li Yizhi vs. Edinboro, Sept. 16, 2003**

.625 (11-1-16)—Amy Snelbaker vs. Norfolk State, Sept. 3, 1994

**.607 (18-1-28)—Li Yizhi vs. Clarion, Oct. 12, 2004**

.600 (19-1-30)—Fadime Verhoeven vs. Slippery Rock, Nov. 4, 1997

.600 (17-2-25)—Fadime Verhoeven vs. Millersville, Nov. 14, 1997

5 game matches

.636 (22-1-33)—Beth Hackenberg vs. Mount Union, Oct. 19, 2001

**.623 (35-2-53)—Li Yizhi vs. IUP, Nov. 4, 2003**

**.548 (18-1-31)—Li Yizhi vs. NYIT, Oct. 4, 2003**

.545 (13-1-22)—Natalie Jackson vs. California (Pa.), Oct. 3, 1995

.541 (24-4-37)—Amy Snelbaker vs. Slippery Rock, Oct. 6, 1995

.529 (10-1-17)—Beth Hackenberg vs. California (Pa.), Oct. 8, 2002

.524 (11-0-21)—Lillian Bortoto vs. NYIT, Oct. 4, 2003

### **Assists**

3 game matches

64—Trish Heffelfinger vs. Alderson-Broadus, Oct. 22, 1993

61—Shana Fessette vs. Edinboro, Nov 11, 2000

52—Shana Fessette vs. IUP, Oct 24, 2000

52—Becky Peters vs. York College, Oct. 31, 1997

51—Kelly Kostelich vs. East Stroudsburg, Oct. 10, 2003

51—Becky Peters vs. East Stroudsburg, Nov. 15, 1996

50—Shana Fessette vs. Alderson Broadus, Oct 20, 2000

4 game matches

70—Becky Peters vs. Edinboro, Oct. 14, 1997

64—Shana Fessette vs. SUNY-Stony Brook, Oct. 10, 1998

63—Kelli Crouch vs. IUP, Sept. 19, 2000

63—Shana Fessette vs. Edinboro, Oct. 13, 1998

62—Becky Peters vs. Slippery Rock, Nov. 4, 1997

62—Becky Peters vs. IUP, Oct. 31, 1995

61—Shana Fessette vs. IUP, Oct. 26, 1999

61—Shana Fessette vs. Slippery Rock, Oct. 31, 2000  
5 game matches

85—Shana Fessette vs. Edinboro, Nov, 13, 1999

79—Shana Fessette vs. IUP, Sept. 25, 2001

68—Shana Fessette vs. Juniata College, Oct. 9, 1999

68—Allison Furry vs. IUP, Nov. 4, 2003

68—Shana Fessette vs. SUNY-Stony Brook, Oct. 9, 1998

*Allison Furry (2002-present)*

### **Digs**

3 game matches

27—Kristi Kauffman vs. Slippery Rock, Oct. 15, 2002

**26—Li YiZhi vs. Augustana, Sept. 2, 2005**

**24—Li Yizhi vs. Slippery Rock, Oct. 19, 2004**

**24—Li Yizhi vs. Millersville, Oct. 11, 2003**

24—Kelly Wengerter vs. Slippery Rock, Oct. 15, 2002

23—Kristi Kauffman vs. East Stroudsburg, Oct. 10, 2003

23—Denise Kurtz vs. Queens College, Oct. 16, 1993

22—Kristi Kauffman vs. California (Pa.), Oct. 7, 2003

22—Kelly Wengerter vs. Shippensburg, Oct. 11, 2002

22—Tara Newcomer vs. Queens College, Oct. 16, 1993

4 game matches

27—Kara Warnke vs. Slippery Rock, Oct. 31, 2000

27—Sarah Curtis vs. Southern Colorado, Sept. 5, 1997

25—Kristi Kauffman vs. IUP, Oct. 1, 2002

24—Kristi Kauffman vs. Slippery Rock, Oct. 26, 2002

**24—Li Yizhi vs. Indiana (Pa.), Nov. 2, 2004**

23—Amanda Snyder vs. California (Pa.), Nov. 3, 2001

23—Kelly Crouch vs. California (Pa.), Nov. 3, 2001

23—Tara Newcomer vs. IUP, Sept. 14, 1993

**22—Li YiZhi vs. Clarion, Nov. 5, 2005**

**21—Li YiZhi vs. California, Sep. 20, 2005**

**21—Li YiZhi vs. University of Tampa, Sept. 3, 2005**

5 game matches

33—Kelly Crouch vs. IUP, Sept. 25, 2001

32—Kristi Kauffman vs. Catawba College, Oct. 5, 2002

**31—Li YiZhi vs. Barry University, Sept. 3, 2005**

30—Megan Best vs. California (Pa.), Oct. 3, 1995

27—Kelly Wengerter vs. Kutztown, Oct. 12, 2002

27—Kelly Kostelich vs. Catawba College, Oct. 5, 2002

27—Sarah Curtis vs. Central Missouri, Sept. 5, 1997

**26—Li YiZhi vs. Cal State L.A., Dec. 1, 2005**

25—Kristi Kauffman vs. Northwood, Sept. 4, 2004

### **Block Solo**

3 game matches

10—Natalie Jackson vs. East Stroudsburg, Oct. 23, 1992

8—Natalie Jackson vs. Alderson-Broadus, Oct. 22,

1993

**7—Li Yizhi vs. Mercy College, Oct. 3, 2003**

7—Natalie Jackson vs. California (Pa.), Sept. 24, 1993



## Lady Eagle Volleyball Records

- 7—Natalie Jackson vs. Queens College, Oct. 16, 1993  
 6—Lillian Bortoto vs. Mercy College, Oct. 3, 2003  
 5—Lillian Bortoto vs. Clarion, Oct. 21, 2003  
 5—Kathryn Stallings vs. Northern Michigan, Aug 27, 1999  
 4 game matches  
 5—Kathryn Stallings vs. Edinboro, Oct. 13, 1998  
 5—Kathryn Stalling vs. IUP, Oct. 20, 1998  
 5—Natalie Jackson vs. East Stroudsburg, Oct. 15, 1994  
**4—Li YiZhi vs. Clarion, Nov. 5, 2005**  
**4—Li YiZhi vs. California (Pa.), Sept. 20, 2005**  
 4—Lillian Bortoto vs. Midwestern, Aug. 31, 2003  
 4—Lillian Bortoto vs. Clarion, Sept. 19, 2003  
 4—Beth Hackenberg vs. California (Pa.), Oct. 8, 2002  
 4—Kathryn Stallings vs. Northern Michigan, Sept. 2, 2000  
 4—Fadime Verhoeven vs. Millersville, Nov. 10, 1995  
 4—Fadime Verhoeven vs. Gannon, Sept. 2, 1994  
 4—Natalie Jackson vs. Millersville, Oct. 7, 1994  
 4—Natalie Jackson vs. IUP, Sept. 14, 1993  
 5 game matches  
 10—Natalie Jackson vs. Queens College, Sept. 10, 1993  
 6—Natalie Jackson vs. California (Pa.), Nov. 9, 1993  
 5—Natalie Jackson vs. Slippery Rock, Oct. 6, 1995  
 4—Natalie Jackson vs. IUP, Nov. 1, 1994  
 4—Jen Thompson vs. Mercyhurst, Aug. 31, 2002  
 4—Beth Hackenberg vs. IUP, Sept. 25, 2001  
 4—Fadime Verhoeven vs. Juniata, Sept. 1, 1995  
 4—Natalie Jackson vs. Dowling College, Oct. 14, 1994
- Block Assists**  
 3 game matches  
**10—Li Yizhi vs. Indiana (Pa.), Nov. 12, 2004**  
**9—Li YiZhi vs. Slippery Rock, Sept. 27, 2005**  
 8—Kathryn Stallings vs. WV Wesleyan, Sept. 4, 1999  
**7—Li YiZhi vs. Millersville, Oct. 7, 2005**  
**7—Stacy Borgia vs. Lees-McRae, Sept. 30, 2005**  
 7—Kathryn Stallings vs. Edinboro, Oct. 7, 2000  
 7—Kathryn Stallings vs. East Stroudsburg, Nov 10, 2000  
**7—Li Yizhi vs. IUP, Sept. 30, 2003**  
 7—Stephanie LaFata vs. Alderson Broaddus, Oct.23, 1999  
 7—Tara Newcomer vs. Juniata, Sept. 27, 1996  
 7—Natalie Jackson vs. Clarion, Sept. 21, 1993  
 7—Lillian Bortoto vs. Shippensburg, Oct. 9, 2004  
 4 game matches  
 13—Lillian Bortoto vs. Clarion, Oct. 12, 2004  
 10—Kathryn Stallings vs. IUP, Oct. 26, 1999  
**9—Inga Kurgonaite vs. Clarion, Oct. 12, 2004**  
 9—Lillian Bortoto vs. Indiana (Pa.), Aug. 28, 2004  
 9—Kathryn Stallings vs. Slippery Rock, Nov. 4, 1998  
 8—Lillian Bortoto vs. Indiana (Pa.), Nov. 2, 2004
- 8—Li Yizhi vs. IUP, Nov. 11, 2003  
 8—Kathryn Stallings vs. Edinboro, Sept. 16, 2000  
 8—Fadime Verhoeven vs. Edinboro, Nov. 25, 1997  
**8—Li Yizhi vs. Indiana (Pa.), Nov. 2, 2004**  
 5 game matches  
 10—Stephanie LaFata vs. Edinboro, Nov. 13, 1999  
**7—Li YiZhi vs. Cal State L.A., Dec. 1, 2005**  
**7—Inga Kurgonaite vs. Cal State L.A., Dec. 1, 2005**  
 7—Kara Warnke vs. Wheeling Jesuit, Oct. 27, 2001  
 7—Shana Fessette vs. New Haven, Oct. 10, 1998  
 7—Stephanie LaFata vs. New Haven, Oct. 10, 1998  
 7—Stephanie LaFata vs. Slippery Rock, Nov. 4, 1998  
 7—Amber Zaritski vs. Stony Brook, Oct. 11, 1997  
 6—Lillian Bortoto vs. Edinboro, Nov. 15, 2003  
 6—Lillian Bortoto vs. North Alabama, Dec. 4, 2003  
 6—Kara Warnke vs. Wheeling Jesuit, Oct. 6, 2001  
 6—Kelly Crouch vs. Slippery Rock, Nov. 4, 1998
- Total Blocks**  
 3 game match  
**11—Li Yizhi vs. Indiana (Pa.), Nov. 12, 2004**  
**11—Li Yizhi vs. IUP, Sept. 30, 2003**  
**10—Li YiZhi vs. Millersville, Oct. 7, 2005**  
**10—Li Yizhi vs. Mercy, Oct. 3, 2003**  
 10—Lillian Bortoto vs. Clarion, Oct. 21, 2003  
 10—Natalie Jackson vs. Clarion, Sept. 21, 1993  
**9—Li YiZhi vs. Virginia Union, Oct. 1, 2005**  
**9—Stacy Borgia vs. Lees-McRae, Sept. 30, 2005**  
**9—Li YiZhi vs. Slippery Rock, Sept. 27, 2005**  
 9—Kathryn Stallings vs. East Stroudsburg, Nov. 10, 2000  
 9—Stephanie LaFata vs. Alderson Broaddus, Oct 23, 1999  
 9—Kathryn Stallings vs. WV Wesleyan, Sept. 4, 1999  
 9—Natalie Jackson vs. Alderson-Broaddus, Oct. 22, 1993  
 9—Lillian Bortoto vs. Shippensburg, Oct. 9, 2004  
 4 game match  
 14—Lillian Bortoto vs. Clarion, Oct. 12, 2004  
 11—Lillian Bortoto vs. Indiana (Pa.), Aug. 28, 2004  
 11—Natalie Jackson vs. East Stroudsburg, Oct. 15, 1994  
**10—Li YiZhi vs. Clarion, Nov. 5, 2005**  
 10—Kathryn Stalling vs. Northern Michigan, Sept. 2, 2000  
 10—Kathryn Stallings vs. IUP, Sept. 19, 2000  
 10—Kathryn Stallings vs. IUP, Oct. 26, 1999  
 10—Kathryn Stallings vs. IUP, Oct. 20, 1998  
**10—Inga Kurgonaite vs. Clarion, Oct. 12, 2004**  
 9—Lillian Bortoto vs. IUP, Nov. 11, 2003  
**9—Li Yizhi vs. IUP, Nov 11, 2003**  
 9—Lillian Bortoto vs. Indiana (Pa.), Nov. 2, 2004  
 5 game match  
 15—Natalie Jackson vs. Queens College, Sept. 10, 1993  
 10—Stephanie LaFata vs. Edinboro, Sept. 19, 1999  
 10—Kathryn Stallings vs. Slippery Rock, Nov. 4, 1998  
 9—Kara Warnke vs. Wheeling Jesuit, Oct. 6, 2001  
 9—Stephanie LaFata vs. New Haven, Oct. 10, 1998



## Lady Eagle Volleyball Records

- 9—Stacy Borgia vs. IUP, Sep. 13, 2005  
 9—Li YiZhi vs. Cal State L.A., Dec. 1, 2005
- Service Aces**  
 3 game matches  
 14—Kelly Kostelich vs. Cheyney, Oct. 8, 2005  
 12—Kelly Bebee vs. Cheyney, Oct 11, 2003  
 12—Patricia Oslislo vs. Cheyney, Sept. 28, 2002  
 10—Mayuni Ishihara vs. St. Anselm College, Oct. 14, 2005  
 10—Meghan Hayes vs. Cheyney, Sept. 28, 2002  
 10—Trish Heffelfinger vs. Edinboro, Sept. 7, 1993  
 9—Kelly Kostelich vs. Mercy College, Oct. 2, 2004  
 8—Beth Hackenberg vs. LIU-Southampton, Oct. 27, 2001  
 8—Stephanie LaFata vs. WV Wesleyan, Sept. 4, 1999  
 8—Kelly Wengerter vs. Cheyney, Sept. 24, 2004  
 7—Meghan Hayes vs. Cheyney, Oct 11, 2003  
 7—Amanda Snyder vs. Cheyney, Oct 11, 2003  
 4 game matches  
 8—Tara Newcomer vs. Kutztown, Sept. 18, 1993  
 7—Denise Kurtz vs. Kutztown, Sept. 18, 1993  
 7—Trish Heffelfinger vs. Clarion, Oct. 26, 1993  
 6—Kelly Kostelich vs. Kutztown, Nov 14, 2003  
 6—Li Yizhi vs. Edinboro, Sept 16, 2003  
 6—Beth Hackenberg vs. Slippery Rock, Oct. 9, 2001  
 6—Megan Best vs. Edinboro, Nov. 22, 1997  
 6—Tara Newcomer vs. East Stroudsburg, Oct. 15, 1994  
 6—Amy Snelbaker vs. Kutztown, Oct. 30, 1993  
 5 game matches  
 10—Trish Heffelfinger vs. California (Pa.), Nov. 9, 1993  
 6—Kristi Kauffman vs. Northwest Missouri State, Sept. 7, 2002  
 6—Meghan Hayes vs. East Stroudsburg, Sept. 28, 2002  
 6—Jodi Adelsberger vs. Bellamine, Sept. 3, 1993  
 5—Kelly Crouch vs. Wheeling Jesuit, Oct. 27, 2001  
 5—Tara Newcomer vs. Edinboro, Oct. 29, 1995  
 5—Becky Peters vs. IUP, Nov. 1, 1994

### Single-Season Individual Records

Hitting Percentage	G	Pct.	Yr.	
<b>LiYiZhi</b>	<b>126</b>	<b>.471</b>	<b>2003</b>	
Attack Attempts	G	Attempts	Yr.	
Lauren Nuzum	150	1387	2001	
Attack Attempts/Game	G	Attempts	Avg.	Yr.
Lauren Nuzum	150	1387	9.25	2001
Kills	G	Kills	Yr.	
<b>LiYiZhi</b>	<b>126</b>	<b>538</b>	<b>2003</b>	
Kills Per Game	G	Kills	Avg.	Yr.
<b>LiYiZhi</b>	<b>126</b>	<b>538</b>	<b>4.27</b>	<b>2003</b>
Assists	G	Assists	Yr.	
Becky Peters	165	1832	1997	

Assists Per Game	G	Assists	Avg.	Yr.
Shana Fessette	85	1063	12.51	2000
Digs	G	Digs	Yr.	
<b>LiYiZhi</b>	<b>132</b>	<b>536</b>	<b>2005</b>	
Digs Per Game	G	Digs	Avg.	Yr.
Kristi Kauffman	100	410	4.10	2002
Block Solos	G	BS	Yr.	
Natalie Jackson	108	98	1992	
Block Assists	G	BA	Yr.	
<b>LiYiZhi</b>	<b>132</b>	<b>140</b>	<b>2005</b>	
Blocks/Game	G	Blocks	Avg.	Yr.
<b>LiYiZhi</b>	<b>104</b>	<b>172</b>	<b>1.65</b>	<b>2004</b>
Service Aces	G	Aces	Yr.	
Sarah Curtis	143	85	1996	
Service Aces Per Game	G	Aces	Avg.	Yr.
Sarah Curtis	143	85	.59	1996

### Kills - Single Season

Kills	Year
<b>1. Li YiZhi</b>	<b>538</b> <b>2003</b>
2. Kelli Crouch	522     *2001
3. Fadime Verhoeven	515     1997
4. Sarah Schall	508     1997
5. Lauren Nuzum	501     *2001
<b>6. Li YiZhi</b>	<b>497</b> <b>2005</b>
7. Sarah Schall	478     1996
8. Sarah Schall	474     1998
9. Stefanie LaFata	456     1998
10. Sarah Schall	440     1999

### Hitting Pct. - Single Season

Pct.	Year
<b>1. Li YiZhi</b>	<b>.471</b> <b># 2003</b>
<b>2. Li YiZhi</b>	<b>.461</b> <b># 2004</b>
<b>3. Li YiZhi</b>	<b>.431</b> <b>2005</b>
4. Fadime Verhoeven	.361     1997
5. Stefanie LaFata	.351     1999
6. Kathryn Stallings	.350     1999
7. Stefanie LaFata	.340     2000
8. Kathryn Stallings	.338     2000
9. Amy Snelbaker	.335     1995
10. Fadime Verhoeven	.322     1995

### Assists - Single Season

Assists	Year
1. Becky Peters	1,832     1997
2. Shana Fessette	1,821     *2001
3. Shana Fessette	1,555     1998
4. Becky Peters	1,517     1996
5. Shana Fessette	1,503     1999
6. Becky Peters	1,383     1995
7. Becky Peters	1,156     1994
8. Allison Furry	1,111     2003
9. Shana Fessette	1,063     2000
10. Allison Furry	903     2005



# Lady Eagle Volleyball Records

## #NCAA Division III leader

### Service Aces - Single Season

Aces	Year		
1. Megan Best	76	1997	
2. Tricia Heffelfinger	71	1993	
Stefanie LaFata	71	1998	
Sarah Schall	71	1998	
<b>5. Li YiZhi</b>	<b>70</b>	<b>2005</b>	
6. Tara Newcomer	69	1996	
Tamee Dickey	69	1998	
8. Stefanie LaFata	68	1999	
9. Denise Kurtz	67	1993	
10. Beth Hackenberg	66	*2001	

### Digs - Single Season

Digs	Year		
<b>1. Li YiZhi</b>	<b>536</b>	<b>2005</b>	
2. Kelli Crouch	494	*2001	
<b>3. Li YiZhi</b>	<b>466</b>	<b>2003</b>	
4. Lauren Nuzum	442	*2001	
5. Sarah Schall	439	1997	
6. Sarah Schall	429	1998	
7. Kristi Kauffman	410	2002	
8. Kelly Wengerter	400	2002	
9. Tara Newcomer	385	1993	
<b>10. Li YiZhi</b>	<b>365</b>	<b>2004</b>	

### Blocks - Single Season

Blocks	Year		
<b>1. Li YiZhi</b>	<b>188</b>	<b>2005</b>	
<b>2. Li YiZhi</b>	<b>172</b>	<b>2004</b>	
3. Kathryn Stallings	168	1998	
4. Lillian Bortoto	165	2004	
5. Kathryn Stallings	160	1999	
6. Kathryn Stallings	153	2000	
7. Kara Warnke	149	*2001	
8. Natalie Jackson	146	1993	
9. Kathryn Stallings	144	1997	
10. Natalie Jackson	139	1992	

\*Indicates years played were during both match formats (1992-2000 / 2001-present).

1991-2000: Best of five games to 15 points.

2001-present: Best of five games using rally scoring to 30 points; fifth game to 15 points.

## Individual Records - Career

### Kills - Career

Kills	Years		
1. Sarah Schall	1,900	1996-99	
<b>2. Li YiZhi</b>	<b>1,458</b>	<b>2003-05</b>	
3. Stefanie LaFata	1,326	1997-00	

4. Kathryn Stallings	1,307	1997-00	
5. Denise Kurtz	1,162	1992-95	
6. Fadime Verhoeven	1,157	1994-97	
7. Megan Best	1,149	1994-97	
8. Tara Newcomer	1,053	1993-96	
9. Amy Snelbaker	906	1992-95	
Lauren Nuzum	906	*1998-01	

### Hitting Pct. - Career Min. 1500 Attacks

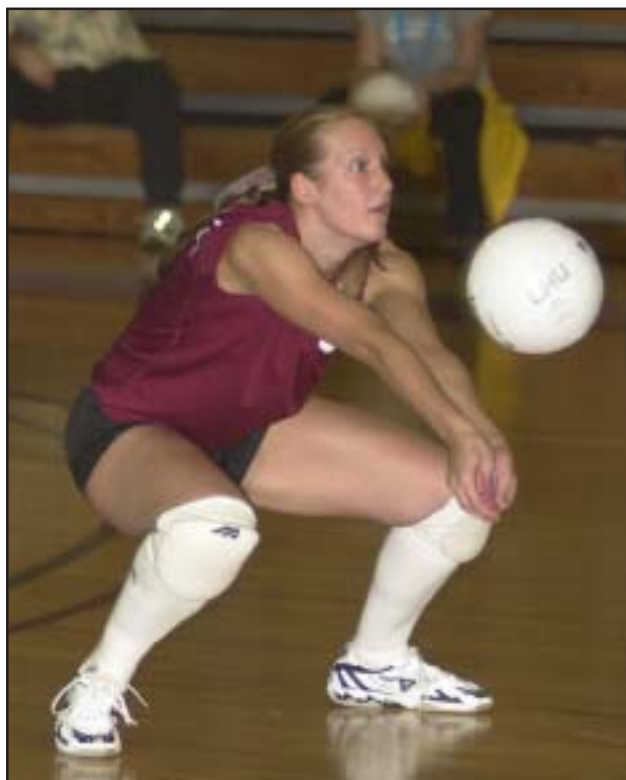
Pct.	Years		
<b>1. Li Yizhi</b>	<b>.454</b>	<b>2003-05</b>	
2. Fadime Verhoeven	.319	1994-97	
3. Stefanie LaFata	.299	1997-00	
<b>4. Inga Kurgonaite</b>	<b>.296</b>	<b>2004-pres.</b>	
5. Kathryn Stallings	.291	1997-00	
6. Denise Kurtz	.253	1992-95	
7. Kristi Kauffman	.252	2001-04	
8. Amy Snelbaker	.243	1992-95	
9. Sarah Schall	.232	1996-99	

### Assists - Career

Assists	Years		
1. Shana Fessette	5,942	*1998-01	
2. Becky Peters	5,888	1994-97	

### Service Aces - Career

Aces	Years		
1. Tara Newcomer	223	1993-96	
2. Tamee Dickey	221	1996-99	



**Kristi Kauffman, 2001-2004**



## Lady Eagle Volleyball Records

3. Stefanie LaFata	220	1997-00
4. Kelli Crouch	218	*1998-01
5. Sarah Schall	208	1996-99
6. Becky Peters	198	1994-97
7. Shana Fessette	196	*1998-01
8. Fadime Verhoeven	178	1994-97
9. Megan Best	172	1994-97
<b>10. Li YiZhi</b>	<b>150</b>	<b>2003-05</b>

### Digs - Career

#### Digs Years

1. Sarah Schall	1,563	1996-99
<b>2. Li YiZhi</b>	<b>1,367</b>	<b>2003-05</b>
3. Tara Newcomer	1,221	1993-96
4. Kelli Crouch	1,217	*1998-01
5. Kristi Kauffman	1,080	2001-04
6. Megan Best	1,022	1994-97
7. Becky Peters	1,016	1994-97
8. Tamee Dickey	949	1996-99
9. Kelly Wengerter	930	2001-04
10. Shana Fessette	900	*1998-01

### Blocks - Career

#### Blocks Years

1. Kathryn Stallings	625	1997-00
<b>2. Li YiZhi</b>	<b>496</b>	<b>2003-05</b>
3. Natalie Jackson	455	1992-95
4. Stefanie LaFata	386	1997-00
5. Amy Snelbaker	358	1992-95
6. Fadime Verhoeven	303	1994-97
7. Lillian Bortoto	295	2003-04
8. Shana Fessette	288	*1998-01
9. Sarah Schall	253	1996-99
10. Becky Peters	217	1994-97

\*Indicates years played were during both match formats (1992-2000 / 2001-present).

1991-2000: Best of five games to 15 points.

2001-present: Best of five games using rally scoring to 30 points; fifth game to 15 points.



**Lilian Bortoto, 2003-2004**

Binghamton	1	0
Bowie State	3	0
Bryant	2	0
Bucknell	1	1
California(Pa.)	27	3
Cal State-Domingues Hills	1	0
Cal State-LA	0	2
Cal State-San Bernardino	0	2
Carnegie Mellon	0	1
Catawba	1	0
Central Missouri State	0	2
Cheyney	4	0
Chukyo	0	2
Clair	32	8
Colorado Christian	0	1
Concordia	1	1
Dowling	4	4
Edinboro	23	2
East Stroudsburg	11	6
Fairmont State	3	0
Ferris State	0	1
Findlay University	1	1
Florida Southern	0	1
Florida Tech	1	0
Francis Marion	2	0
Gallaudet	3	0
Gannon	0	3

## All-Time Series

Opponent	W	L
Adelphi	4	0
Alderson-Broadus	6	0
American International	1	1
Anderson College	2	0
Ashland	4	5
Augustana	1	0
Barry College	1	2
Barton	1	0
Bellarmino	1	1
Bemidji State	0	1
Bentley	1	0



# Lady Eagle Volleyball Records

Gettysburg	2	1	NCU	1	0
Geneva	1	0	New Haven	2	0
Grand Valley	0	2	New York University	1	0
High Point	2	0	New York Tech	5	1
Hillsdale	1	0	Norfolk State	1	0
Indiana(Pa.)	27	2	North Carolina Central	2	0
Indiana Purdue FW	0	1	Northern Colorado	0	2
John Hopkins	1	2	North Dakota State	0	1
Juniata	1	1	Northern Kentucky	1	2
Kutztown	8	3	Northern Michigan	0	3
Lake Superior State	2	0	Northwest Missouri State	0	1
Lebanon Valley	0	1	Northwood	2	2
Lees-McRae	11	0	Pace University 1 0		
Liberty	0	1	Queens	5	1
LIU-Southampton	4	0	Quincy	1	0
Lycoming	1	0	Regis	0	1
Malloy	1	0	Rio Grande	1	0
Mercy	6	2	Rutgers	1	0
Mercyhurst	4	4	Sacred Heart	2	0
Merrimack	5	0	Saginaw Valley	1	0
Midwestern State	1	0	St. Anselm College	1	0
Millersville	12	8	St. Francis	3	0
Minnesota Duluth	1	1	St. Josephs	1	1
Moravian	0	1	Salem-Teikyo	1	0
Mount Olive	3	0	Salisbury	1	0
Mount Union	0	1	Seton Hill	0	1
Muskingum	1	2	Shepard	4	0
			Shippensburg	10	3
			Slippery Rock	22	1
			Southern Colorado	0	1
			SUNY-Stony Brook	2	1
			Susquehanna	1	2
			Texas Women's	0	1
			University of Charleston	2	0
			University of Mass.-Lowell	2	0
			University of North Alabama	0	2
			University of Tampa	0	1
			UPR-Rio Piedras	1	0
			University of San Diego	0	2
			Virginia Union	1	0
			Wayne State	0	1
			West Chester	10	0
			West Liberty	2	0
			West Texas A&M	0	2
			West Virginia Wesleyan	1	6
			Westminster	2	0
			Wheeling Jesuit	3	2
			Widener	0	1
			Wisconsin-Parkside	0	1
			York	1	1





## *Lady Eagle Volleyball Records*

### TEAM RECORDS

	<b>Most</b>	<b>Least</b>
Matches	47 (1997)	17 (1991)
Winning Streak	26 (2005)	—
Consecutive Home Wins	13 (2005-pres.)	—
Consecutive Winning Seasons	7 (1995-01)	—
Wins in a Season	33 (2005)	0 (1991)
Losses in a Season	22 (1992)	4 (2004)
Longest PSAC Winning Streak	25 (1998-00)	—
Longest PSAC Losing Streak	20 (1991-92)	—
Wins Versus PSAC Opponents	28 (1999-00)	—
Sweeps in a Season	25 (1997)	0 (1991)

#### Top Five Team Records

<b>Record</b>	<b>Pct.</b>	<b>Year</b>
28-4	.875	2004
33-6	.846	2005
32-6	.842	1999
31-6	.838	2003
27-10	.730	1995

#### Single-Season Team Records

<b>Hitting Percentage</b>	<b>G</b>	<b>Pct.</b>	<b>Yr.</b>	
	108	.277	2004	
<b>Attack Attempts</b>	<b>G</b>	<b>Attempts</b>	<b>Yr.</b>	
	150	5592	2001	
<b>Attacks/Game</b>	<b>G</b>	<b>Attempts</b>	<b>Avg.</b>	<b>Yr.</b>
	124	4780	38.55	2000
<b>Kills</b>	<b>G</b>	<b>Kills</b>	<b>Yr.</b>	
	150	2175	2001	
<b>Kills/Game</b>	<b>G</b>	<b>Kills</b>	<b>Avg.</b>	<b>Yr.</b>
	124	1863	15.02	2000
<b>Assists</b>	<b>G</b>	<b>Assists</b>	<b>Yr.</b>	
	150	1991	2001	
<b>Assists/Game</b>	<b>G</b>	<b>Assists</b>	<b>Avg.</b>	<b>Yr.</b>
	124	1724	13.90	2000
<b>Digs</b>	<b>G</b>	<b>Digs</b>	<b>Yr.</b>	
	150	2366	2001	
<b>Digs/Game</b>	<b>G</b>	<b>Digs</b>	<b>Avg.</b>	<b>Yr.</b>
	107	2099	19.62	2002
<b>Blocks Solo</b>	<b>G</b>	<b>BS</b>	<b>Yr.</b>	
	108	280	1992	
<b>Block Assists</b>	<b>G</b>	<b>BA</b>	<b>Yr.</b>	
		165	548	1997
<b>Blocks/Game</b>	<b>G</b>	<b>B</b>	<b>Avg.</b>	<b>Yr.</b>
	108	406.5	3.8	2004
<b>Service Aces</b>	<b>G</b>	<b>Aces</b>	<b>Yr.</b>	
	165	405	1997	
<b>Service Aces/Game</b>	<b>G</b>	<b>Aces</b>	<b>Avg.</b>	<b>Yr.</b>
	121	340	2.81	1993

